

924K, 930K, 938K

Wheel Loaders



| | 924K | 930K | 938K |
|-----------------------------|---|---|---|
| Engine Model* | Cat® C6.6 ACERT™ | Cat® C6.6 ACERT™ | Cat® C6.6 ACERT™ |
| Maximum Gross Power: | | | |
| ISO 14396 | 109 kW (146 hp) | 119 kW (160 hp) | 129 kW (173 hp) |
| ISO 14396 (DIN) | 109 kW (148 hp) | 119 kW (162 hp) | 129 kW (175 hp) |
| Bucket Capacity | 1.9-5.0 m ³ (2.5-6.5 yd ³) | 2.1-5.0 m ³ (2.7-6.5 yd ³) | 2.5-5.0 m ³ (3.3-6.5 yd ³) |
| Full Turn Tip Load | 7419 kg (16,352 lb) | 8369 kg (18,444 lb) | 9527 kg (20,997 lb) |
| Operating Weight | 12 868 kg (28,360 lb) | 13 829 kg (30,479 lb) | 15 928 kg (35,104 lb) |

*Engine meets U.S. EPA Tier 4 Interim/EU Stage IIIB emission standards.

Experience the Difference.

Optimized Parallel Lift Z-bar Linkage

Combines the digging efficiency of a traditional Z-bar with tool carrier capabilities for superior performance and flexibility.

Cab and Controls

Large, spacious cab features excellent visibility to the front and rear, extremely low sound levels and low-effort ergonomic joystick controls so you can concentrate on your work. In cab adjustments are easy with intuitive controls and an easy to read optional display.

Intelligent Power Management

A smooth, step-less electronically controlled hydrostatic transmission provides adjustable power to the ground and superb groundspeed control for fast digging cycles and the flexibility to efficiently perform a multitude of tasks.

Powerful Predictable Hydraulics

The system senses demand and adjusts flow and pressure to match. Working with buckets, forks and other work tools has never been more efficient.

Work Tools

A new line of optimized Performance Series buckets, pallet and construction forks as well as a wide range of work tools are available in a Pin-on, Fusion™ coupler or ISO 23727 coupler interface.

Serviceability

Daily service points are easily accessible from ground level. Extended service intervals and excellent service access make daily checks quick and easy, allowing you to get to work sooner.

Contents

| | |
|--|----|
| Parallel Lift Loader Linkage..... | 4 |
| Industry Leading Operator Station..... | 5 |
| Power Train..... | 6 |
| Hydraulics | 7 |
| Work Tools..... | 8 |
| Options..... | 9 |
| Serviceability and Customer Support..... | 10 |
| Wheel Loader Specifications | 11 |
| Bucket Specifications | 18 |
| Operating Specifications | 27 |
| Supplemental Specifications | 33 |
| Standard Equipment..... | 34 |
| Optional Equipment..... | 35 |





The Cat® 924K, 930K and 938K Wheel Loaders set a new standard for productivity, fuel efficiency and comfort. Extremely low sound levels, large spacious cab and intuitive controls keep you working comfortably all day long. The new optimized Z-bar loader linkage delivers the performance and breakout forces of a traditional Z-bar linkage with the parallelism and load handling capability of a tool carrier. Experience the new industry benchmark.

Parallel Lift Loader Linkage

Optimized Z-bar linkage delivers enhanced visibility with maximum productivity.



Optimized Z-bar Linkage

The new optimized patent-pending Z-bar linkage combines the digging efficiency of a traditional Z-bar with tool carrier capabilities for great performance and versatility.

- Parallel lift and high tilt forces throughout the working range help you safely and confidently handle loads with precise control.
- Linkage features excellent visibility to the bucket cutting edge and fork tips.
- High Lift versions are also available on all three models.



Industry Leading Operator Station

Superior visibility, ergonomics and comfort.



Best Seat on the Job Site

Enjoy all day comfort in the spacious new K Series cab:

- Extremely low sound levels.
- Superior visibility to the work tool due to wide curved windshield, redesigned Z-bar linkage, lines routing and work tool design.
- Automatic climate control.
- A heated and ventilated seat option is available for added comfort in a wide range of climates.
- Seat-mounted, ergonomic joystick for lift and tilt functions. Joystick includes integrated Forward/Neutral/Reverse switch, differential lock trigger and optional third and fourth function auxiliary hydraulics.
- Easy access to the cab with ergonomically placed grab rails, walk-up steps and large platform.

Easy to Use Instrument Panel and Display

An optional* secondary display provides easy access to vital machine parameters and works in conjunction with the standard soft touch panel to allow real time adjustments.

- Machine information and diagnostics at a glance.
- Real time and historic fuel usage.
- Backup camera display.
- Help button plus 22 language capability.
- Adjustment of functions such as creep, third function flow, throttle and rimpull.

*Standard feature in Europe.



Power Train

Maximum machine power, reduced fuel consumption.



Intelligent Power Management

The Caterpillar exclusive Intelligent Power Management system actively monitors operator input and power availability to keep the machine working at peak efficiency.

Engine

The Cat® C6.6 ACERT™ engine provides cleaner, quieter operation while delivering superior performance and durability. The engine meets U.S. EPA Tier 4 Interim and EU Stage IIIB emission requirements. Maximum engine speed is now 1,800 rpm for reduced fuel consumption and lower sound levels. The engine also features:

- Passive regeneration system – designed to manage itself so you don't have to.
- Diesel particulate filter that is matched to the anticipated engine overhaul life.
- Class-leading fuel efficiency, significantly reducing owning and operating costs.
- Configurable auto idle shut down feature as standard equipment.

Transmission

A smooth, step-less electronically controlled hydrostatic transmission provides adjustable power to the ground and superb groundspeed control for a multitude of tasks.

- Four speed ranges ensure maximum controllability for any task.
- Rimpull control enables you to match available tractive power to underfoot conditions, helping reduce tire wear.
- Creeper control lets you adjust machine groundspeed when using work tools such as brooms, snow blowers and brushcutters.
- Throttle lock feature allows you to maintain constant engine RPM regardless of machine speed.

Axles and Brakes

Fully locking front differential axles are standard and can be engaged at full torque on the go with a button on the joystick. Limited slip differentials are optional on the rear. Brake system includes independent service brakes on front and rear axles and a spring applied, electronically activated park brake.

Hydraulics

Smooth, efficient operation helps you get the job done faster.

Load-Sensing Hydraulic System

K Series machines feature a new electro-hydraulic control system that is governed by the Intelligent Power Management system. The load-sensing, variable flow system senses work demand and adjusts flow and pressure to match. This allows full hydraulic forces at any engine speed.

- Programmable in-cab kick-outs are easy to set on the go for tilt, lower and lift. This feature is ideal for applications where the work cycle is repeatable.
- Caterpillar exclusive electro-hydraulic snubbing at programmed kickouts and rack/dump stops greatly improves operator comfort and component life in addition to improved material retention.
- Adjustable third function flow through the secondary display (when equipped) for use with hydro-mechanical work tools.
- Optional Ride Control System provides an even smoother ride and excellent material retention.
- Designed with dedicated pumps for steering and implements so there is no compromise in cycle times and efficiency for multi-function operation.



Work Tools

Do more jobs with one machine.



The Right Tool for the Job

An extensive range of work tools and bucket styles are available to make your Cat Wheel Loader one of the most versatile machines on the job site.

Performance Series Buckets

Performance Series Buckets utilize a system-based approach to balance bucket shape with the machine's linkage, weight, lift and tilt capacities. They deliver higher fill factors and better material retention for significant productivity and fuel efficiency improvements. The buckets feature a longer floor, open throat and curved side bars.

Additional Buckets

- Light Material
- Multi Purpose
- Sand and Gravel
- High Dump
- Wood Chip

Material Handling Work Tools

- Pallet Forks
- Construction Forks
- Material Handling Arm

Work Tools for Special Applications

- Dozer Blades
- Snow Plows
- Brooms
- Rakes
- Log and Lumber Forks
- Pipe and Pole Forks
- Side Dump Buckets
- Grapple Buckets
- Grading Buckets

Couplers

The Cat Fusion™ interface provides coupler flexibility without compromise in breakout force and dump clearance. The advanced wedging mechanism creates a tight, rattle-free fit, eliminating play and wear for long service life. The open coupler frame design provides excellent line of sight to the work tool. An ISO 23727 coupler interface is also available for use with competitive work tools.

Options

Customize your machine to meet your needs.

Configure the Machine the Way You Want It

A variety of options are available on the Cat K Series Wheel Loaders to suit your specific application needs. See your Cat dealer for more information about the features below and additional options.



Coupler Options



High Lift Linkage



Counterweight Options



HID Lights



Turbine Precleaner



*Rear Camera in Grill**



Front Light Guards



Rear Light Guards



Windshield Guard



Flexport™ Tires



3rd and 4th Function Hydraulics



Cold Start Package



Blue Angel Certification



*Electric Mirror Adjustment/Heated Mirrors**



Product Link

Additional options include:

- Power Train Side Guards
- Driveshaft Guard
- Rear Waste Gate
- RESPA Cab Filtration
- Lower Power Train Guard
- Crankcase Guard
- Full Coverage Fenders
- Optional Toolbox

*Standard equipment in Europe.

Serviceability

Easy service to keep your machine working.



All service points are accessible from ground level. Three large service doors can be opened and closed in any order to give full access to filters and service points. Extended service intervals reduce service time and maximize uptime. Additional service features include:

- Diesel particulate filter that is matched for anticipated engine overhaul life. Passive regeneration system requires no operator interaction.
- Caterpillar exclusive electric fuel priming pump.
- Jump start studs as standard equipment.
- Single plane cooling system with 6 fins per inch coolers as standard.
- Swing-up air conditioner condenser for easy clean out.
- Product Link ready (standard).

Customer Support

Unmatched support makes the difference.

Renowned Cat Dealer Support

Your Cat dealer is ready to help you every step of the way. From new or used machine sales, to rental or rebuild options, your Cat dealer can provide an optimal solution to your business needs. Unsurpassed worldwide parts availability, trained technicians and customer support agreements maximize your machine uptime.



924K, 930K, 938K Wheel Loader Specifications

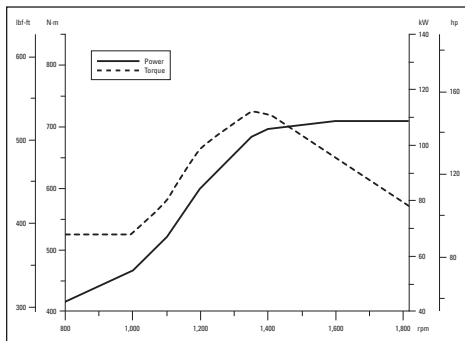
Engine

| | 924K | | 930K | | 938K | |
|-----------------------------|------------------|---------------------|------------------|---------------------|------------------|---------------------|
| Engine Model | Cat® C6.6 ACERT™ | | Cat® C6.6 ACERT™ | | Cat® C6.6 ACERT™ | |
| Maximum Gross Power | | | | | | |
| ISO 14396 | 109 kW | 146 hp | 119 kW | 160 hp | 129 kW | 173 hp |
| ISO 14396 (DIN) | 109 kW | 148 hp | 119 kW | 162 hp | 129 kW | 175 hp |
| Rated Net Power @ 1,800 rpm | | | | | | |
| SAE J1349 | 105 kW | 141 hp | 115 kW | 154 hp | 126 kW | 169 hp |
| ISO 9249 (1977)/EEC 80/1269 | 106 kW | 142 hp | 116 kW | 156 hp | 127 kW | 170 hp |
| ISO 9249 (DIN) | 106 kW | 144 hp | 116 kW | 158 hp | 127 kW | 173 hp |
| Maximum Gross Torque | | | | | | |
| ISO 14396 | 725 N·m | 534 lbf-ft | 775 N·m | 571 lbf-ft | 825 N·m | 608 lbf-ft |
| Maximum Net Torque | | | | | | |
| SAE J1349 | 699 N·m | 515 lbf-ft | 748 N·m | 551 lbf-ft | 802 N·m | 591 lbf-ft |
| ISO 9249 (1977)/EEC 80/1269 | 706 N·m | 520 lbf-ft | 756 N·m | 557 lbf-ft | 811 N·m | 598 lbf-ft |
| Displacement | 6.6 L | 402 in ³ | 6.6 L | 402 in ³ | 6.6 L | 402 in ³ |
| Bore | 105 mm | 4 in | 105 mm | 4 in | 105 mm | 4 in |
| Stroke | 127 mm | 5 in | 127 mm | 5 in | 127 mm | 5 in |

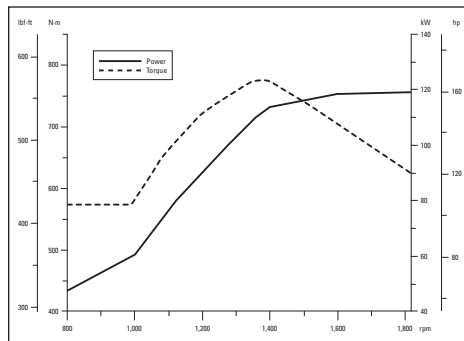
- Net power ratings are tested at the reference conditions for the specified standard.
- Net power shown is the power available at the flywheel when the engine is equipped with alternator, air cleaner, diesel exhaust filter, and fan at minimum speed.
- No derating required up to 3000 m (10,000 ft) altitude. Auto derate protects hydraulic and transmission systems.
- Flywheel per the SAE reference conditions when the fan is at maximum speed.
- Cat C6.6 engine meets U.S. EPA Tier 4 Interim (EU Stage IIIB) emission requirements.
- K Series Small Wheel Loaders have a passive regeneration system with a long life Diesel Particulate Filter.

Engine Power and Torque

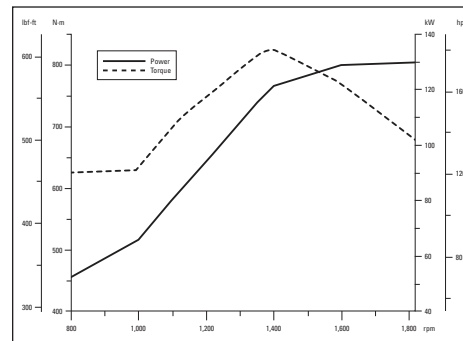
924K



930K

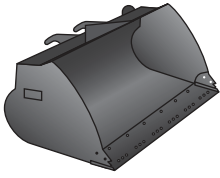


938K



924K, 930K, 938K Wheel Loader Specifications

Buckets



- Performance Series Buckets utilize a long floor and open throat resulting in easy loading and good material retention.

| | 924K | | 930K | | 938K | |
|-----------------|------------------------|-------------------------|------------------------|-------------------------|------------------------|-------------------------|
| General Purpose | 1.9-2.5 m ³ | 2.5-3.3 yd ³ | 2.1-2.7 m ³ | 2.7-3.5 yd ³ | 2.5-3.2 m ³ | 3.3-4.2 yd ³ |
| Light Material | 3.5-5.0 m ³ | 4.6-6.5 yd ³ | 3.5-5.0 m ³ | 4.6-6.5 yd ³ | 3.5-5.0 m ³ | 4.6-6.5 yd ³ |

Weights

| | 924K | | 930K | | 938K | |
|----------------------------------|-----------|-----------|-----------|-----------|-----------|-----------|
| Operating weight – Standard Lift | 12 868 kg | 28,360 lb | 13 829 kg | 30,479 lb | 15 928 kg | 35,104 lb |
| Operating weight – High Lift | 13 166 kg | 29,018 lb | 14 077 kg | 31,024 lb | 16 177 kg | 35,653 lb |

- Specifications shown are for a machine configured with general purpose Fusion bucket, bolt-on cutting edges, counterweights, additional guarding, 80 kg (176 lb) operator, and Michelin 20.5 R25 (L-3) XHA2 tires.
 - 924K is configured with a 1.9 m³ (2.5 yd³) Fusion bucket with bolt-on cutting edge.
 - 930K is configured with a 2.1 m³ (2.7 yd³) Fusion bucket with bolt-on cutting edge.
 - 938K is configured with a 2.5 m³ (3.3 yd³) Fusion bucket with bolt-on cutting edge.

Steering



- Steering system uses a dedicated load sensing variable displacement pump with dual double acting cylinders.

| | 924K | | 930K | | 938K | |
|--|-------------|---------------|-------------|---------------|-------------|---------------|
| Steering articulation angle each direction | 40° | | 40° | | 40° | |
| Steering cylinder: double acting | | | | | | |
| Bore diameter | 70 mm | 2.8 in | 70 mm | 2.8 in | 80 mm | 3.1 in |
| Rod diameter | 40 mm | 1.6 in | 40 mm | 1.6 in | 50 mm | 2 in |
| Stroke | 438 mm | 17.2 in | 438 mm | 17.2 in | 399 mm | 15.7 in |
| Maximum flow – steering pump | 130 L/min | 34 gal/min | 130 L/min | 34 gal/min | 130 L/min | 34 gal/min |
| Maximum working pressure – steering pump | 24 130 kPa | 3,500 psi | 24 130 kPa | 3,500 psi | 24 130 kPa | 3,500 psi |
| Maximum steering torque | | | | | | |
| 0° (straight machine) | 50 375 N·m | 37,155 lbf-ft | 50 375 N·m | 37,155 lbf-ft | 57 630 N·m | 42,506 lbf-ft |
| 40° (full turn) | 37 620 N·m | 27,747 lbf-ft | 37 620 N·m | 27,747 lbf-ft | 42 570 N·m | 31,398 lbf-ft |
| Steering cycle times (full left to full right) | | | | | | |
| 800 rpm: pump flow limited | 2.8 seconds | | 2.8 seconds | | 3.1 seconds | |
| 1,800 rpm: 90 rpm steering wheel speed | 2.4 seconds | | 2.4 seconds | | 2.3 seconds | |
| Number of steering wheel turns | | | | | | |
| Full left to full right or full right to full left | 3.5 turns | | 3.5 turns | | 3.3 turns | |

Loader Hydraulic System



- Implement system uses a dedicated load sensing variable displacement pump with dual double acting lift cylinders and a single double acting tilt cylinder.
- 3rd function flow is fully adjustable from 20% to 100% of maximum flow through the secondary display when equipped.
- 4th function flow is fixed.

| | 924K | | 930K | | 938K | |
|---|-------------|------------|-------------|------------|-------------|------------|
| Maximum flow – implement pump | 150 L/min | 40 gal/min | 190 L/min | 50 gal/min | 190 L/min | 50 gal/min |
| 3rd function maximum flow | 150 L/min | 40 gal/min | 190 L/min | 50 gal/min | 190 L/min | 50 gal/min |
| 4th function maximum flow | 75 L/min | 20 gal/min | 75 L/min | 20 gal/min | 75 L/min | 20 gal/min |
| Maximum working pressure – implement pump | 26 000 kPa | 3,771 psi | 25 000 kPa | 3,626 psi | 28 000 kPa | 4,061 psi |
| Relief pressure – tilt cylinder | 28 000 kPa | 4,061 psi | 28 000 kPa | 4,061 psi | 30 000 kPa | 4,351 psi |
| 3rd function maximum working pressure | 26 000 kPa | 3,771 psi | 25 000 kPa | 3,626 psi | 28 000 kPa | 4,061 psi |
| 3rd function relief pressure | 28 000 kPa | 4,061 psi | 28 000 kPa | 4,061 psi | 30 000 kPa | 4,351 psi |
| 4th function maximum working pressure | 26 000 kPa | 3,771 psi | 25 000 kPa | 3,626 psi | 28 000 kPa | 4,061 psi |
| 4th function relief pressure | 28 000 kPa | 4,061 psi | 28 000 kPa | 4,061 psi | 30 000 kPa | 4,351 psi |
| Lift cylinder: double acting | | | | | | |
| Bore diameter | 110 mm | 4.3 in | 120 mm | 4.7 in | 120 mm | 4.7 in |
| Rod diameter | 60 mm | 2.4 in | 65 mm | 2.6 in | 65 mm | 2.6 in |
| Stroke | 728 mm | 28.7 in | 728 mm | 28.7 in | 789 mm | 31.1 in |
| Tilt cylinder: double acting | | | | | | |
| Bore diameter | 130 mm | 5.1 in | 150 mm | 5.9 in | 150 mm | 5.9 in |
| Rod diameter | 70 mm | 2.8 in | 90 mm | 3.5 in | 90 mm | 3.5 in |
| Stroke | 555 mm | 21.9 in | 555 mm | 21.9 in | 555 mm | 21.9 in |
| Hydraulic cycle times (1,800 rpm) | | | | | | |
| Raise (ground level to maximum lift) | 5.5 seconds | | 5.1 seconds | | 5.5 seconds | |
| Dump (at maximum lift height) | 1.5 seconds | | 1.5 seconds | | 1.5 seconds | |
| Float down (maximum lift to ground level) | 2.6 seconds | | 2.7 seconds | | 2.7 seconds | |
| Total cycle time | 9.6 seconds | | 9.3 seconds | | 9.7 seconds | |
| Hydraulic cycle times (1,000 rpm) | | | | | | |
| Raise (ground level to maximum lift) | 9.6 seconds | | 9.1 seconds | | 9.8 seconds | |
| Dump (at maximum lift height) | 3.0 seconds | | 2.6 seconds | | 2.6 seconds | |
| Float down (maximum lift to ground level) | 2.6 seconds | | 2.7 seconds | | 2.7 seconds | |

Service Refill Capacities

| | 924K | | 930K | | 938K | |
|-----------------------------------|-------------|----------|-------------|----------|-------------|----------|
| Fuel tank | 195 L | 51.5 gal | 195 L | 51.5 gal | 195 L | 51.5 gal |
| Cooling system | 30 L | 7.9 gal | 30 L | 7.9 gal | 32 L | 8.5 gal |
| Engine crankcase | 20 L | 5.3 gal | 20 L | 5.3 gal | 20 L | 5.3 gal |
| Transmission (gear box) | 8.5 L | 2.2 gal | 8.5 L | 2.2 gal | 11 L | 2.9 gal |
| Axles | | | | | | |
| Front | 21 L | 5.5 gal | 26 L | 6.9 gal | 35 L | 9.2 gal |
| Rear | 21 L | 5.5 gal | 25 L | 6.6 gal | 35 L | 9.2 gal |
| Hydraulic system (including tank) | 160 L | 42.3 gal | 165 L | 43.6 gal | 170 L | 44.9 gal |
| Hydraulic tank | 90 L | 23.8 gal | 90 L | 23.8 gal | 90 L | 23.8 gal |

924K, 930K, 938K Wheel Loader Specifications

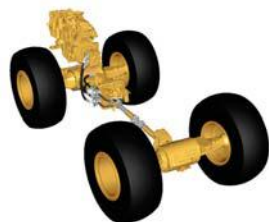
Transmission



*Creeper control allows maximum speed range adjustability from 1 km/h (0.6 mph) to 13 km/h (8 mph) in Range 1 through the secondary display when equipped. Factory default is 7 km/h (4.4 mph).

| | 924K | | 930K | | 938K | |
|----------|-----------|-------------|-----------|-------------|-----------|-------------|
| Forward | | | | | | |
| Range 1* | 1-13 km/h | 0.6-8.0 mph | 1-13 km/h | 0.6-8.0 mph | 1-13 km/h | 0.6-8.0 mph |
| Range 2 | 13 km/h | 8 mph | 13 km/h | 8 mph | 13 km/h | 8 mph |
| Range 3 | 27 km/h | 17 mph | 27 km/h | 17 mph | 27 km/h | 17 mph |
| Range 4 | 40 km/h | 25 mph | 40 km/h | 25 mph | 40 km/h | 25 mph |
| Reverse | | | | | | |
| Range 1* | 1-13 km/h | 0.6-8.0 mph | 1-13 km/h | 0.6-8.0 mph | 1-13 km/h | 0.6-8.0 mph |
| Range 2 | 13 km/h | 8 mph | 13 km/h | 8 mph | 13 km/h | 8 mph |
| Range 3 | 27 km/h | 17 mph | 27 km/h | 17 mph | 27 km/h | 17 mph |
| Range 4 | 40 km/h | 25 mph | 40 km/h | 25 mph | 40 km/h | 25 mph |

Power Train



• Power train is governed by the Caterpillar exclusive Intelligent Power Management system to deliver peak performance and efficiency.

**Differential front locking axle can be engaged on the go at full torque up to 10 km/h (6.2 mph) on the 924K/930K and up to 20 km/h (12.4 mph) on the 938K.

| | 924K | 930K | 938K |
|-----------------------------|---------------------------------------|---------------------------------------|---------------------------------------|
| Front axle | Fixed | Fixed | Fixed |
| Traction aid** | Locking differential standard | Locking differential standard | Locking differential standard |
| Rear axle | Oscillating | Oscillating | Oscillating |
| Oscillation with 17.5 tires | ± 13 degrees | – | – |
| Oscillation with 20.5 tires | ± 11 degrees | ± 11 degrees | ± 11 degrees |
| Traction aid | Limited slip differential optional | Limited slip differential optional | Limited slip differential optional |
| Brakes | | | |
| Service brakes | Inboard wet disc | Inboard wet disc | Outboard wet disc |
| Park brake | Spring applied hydraulically released | Spring applied hydraulically released | Spring applied hydraulically released |

Tires

| | 924K | 930K | 938K |
|--------------------------|------|------|------|
| 17.5 R25, radial (L-2) | Yes | | |
| 17.5 R25, radial (L-3) | Yes | | |
| 17.5 R25, radial (L-5) | Yes | | |
| 20.5-25, 12PR (L-2) | Yes | Yes | Yes |
| 20.5-25, 12PR (L-3) | Yes | Yes | Yes |
| 20.5-25, 16PR (L-5) | Yes | Yes | Yes |
| 20.5 R25, radial (L-2) | Yes | Yes | Yes |
| 20.5 R25, radial (L-3)* | Yes | Yes | Yes |
| 20.5 R25, radial (L-5) | Yes | Yes | Yes |
| 550/65 R25, radial (L-3) | Yes | | |
| 600/65 R25, radial (L-3) | | Yes | |
| 650/65 R25, radial (L-3) | | | Yes |
| Skidder/Agriculture | Yes | Yes | Yes |
| Flexports Gen II | Yes | Yes | Yes |

*Standard tire.

- Other tire choices available, contact your Cat dealer for details. Not all tires are available in all regions.
- In certain applications, the loader's productive capabilities may exceed the tires' tonnes-km/h (ton-mph) capabilities.
- Caterpillar recommends that you consult a tire supplier to evaluate all conditions before selecting a tire model.

Cab



- ROPS: SAE J1040 MAY94, ISO 3471-1994.
- FOPS: SAE J/ISO 3449 APR98, Level II, ISO 3449 1992 Level II.
- Cat cab and Rollover Protective Structures (ROPS) are standard in North America and Europe.
- The declared dynamic operator sound pressure levels per ISO 6396:2008**, when properly installed and maintained, are:
 - Standard cab: 68 ±3 dB(A)
 - Deluxe cab: 66 ±2 dB(A)

**The measurements were conducted with the cab doors and windows closed and at 70% of the maximum engine cooling fan speed. The sound level may vary at different engine cooling fan speeds.

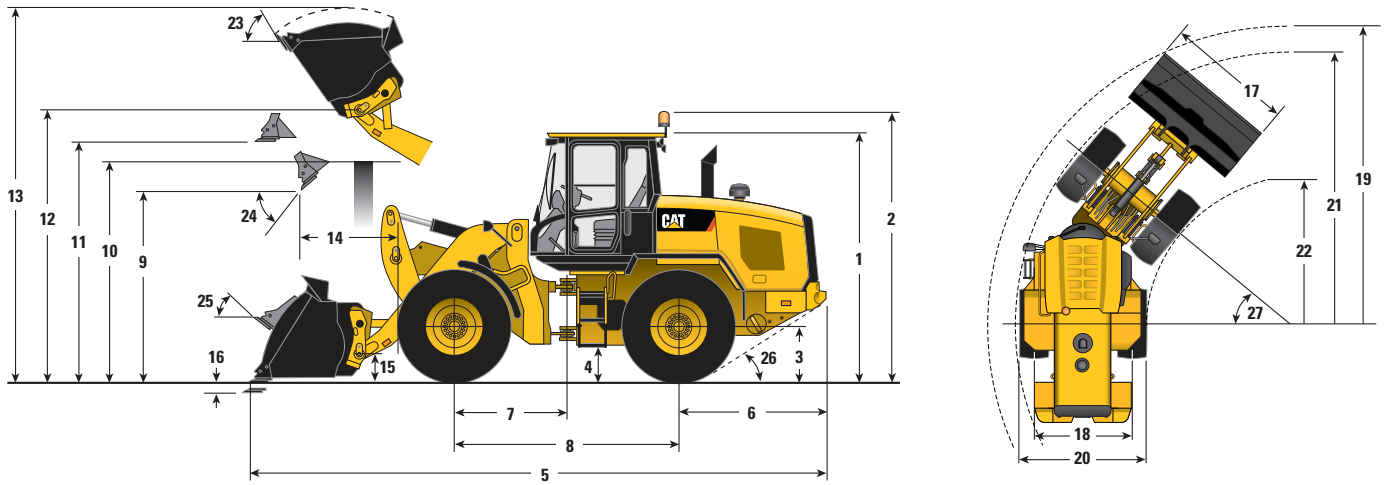
Operating Specifications

| | 924K | | 930K | | 938K | |
|--|---------|-----------|---------|-----------|-----------|-----------|
| Tipping load – straight (ISO 14397-1) | 8644 kg | 19,051 lb | 9803 kg | 21,605 lb | 11 209 kg | 24,704 lb |
| Tipping load – full turn (ISO 14397-1) | 7419 kg | 16,352 lb | 8369 kg | 18,444 lb | 9527 kg | 20,997 lb |
| Clearance: full lift and 45° dump | 2885 mm | 9'5" | 2828 mm | 9'3" | 2834 mm | 9'3" |
| Reach: full lift and 45° dump | 1024 mm | 3'4" | 1064 mm | 3'5" | 1146 mm | 3'9" |
| Steering articulation angle each direction | 40° | | 40° | | 40° | |

924K, 930K, 938K Wheel Loader Specifications

Dimensions with Bucket

All dimensions are approximate. Dimensions will vary with bucket and tire choice. Refer to Operating Specifications with Buckets.



Standard Lift

| | 924K | | 930K | | 938K | |
|-------------------------------------|---------|--------|---------|--------|---------|--------|
| ** 1 Height: ground to cab | 3340 mm | 10'11" | 3340 mm | 10'11" | 3340 mm | 10'11" |
| ** 2 Height: ground to beacon | 3669 mm | 12'0" | 3669 mm | 12'0" | 3669 mm | 12'0" |
| ** 3 Height: ground axle center | 685 mm | 2'2" | 685 mm | 2'2" | 685 mm | 2'2" |
| ** 4 Height: ground clearance | 400 mm | 1'3" | 400 mm | 1'3" | 390 mm | 1'3" |
| * 5 Length: overall | 7451 mm | 24'5" | 7530 mm | 24'8" | 7656 mm | 25'1" |
| 6 Length: rear axle to bumper | 1986 mm | 6'6" | 1993 mm | 6'6" | 1968 mm | 6'5" |
| 7 Length: hitch to front axle | 1500 mm | 4'11" | 1500 mm | 4'11" | 1525 mm | 5'0" |
| 8 Length: wheel base | 3000 mm | 9'10" | 3000 mm | 9'10" | 3050 mm | 10'0" |
| * 9 Clearance: bucket at 45° | 2885 mm | 9'5" | 2828 mm | 9'3" | 2834 mm | 9'3" |
| ** 10 Clearance: load over height | 3330 mm | 10'11" | 3331 mm | 10'11" | 3354 mm | 11'0" |
| ** 11 Clearance: level bucket | 3580 mm | 11'8" | 3580 mm | 11'8" | 3641 mm | 11'11" |
| ** 12 Height: bucket pin | 3907 mm | 12'9" | 3907 mm | 12'9" | 3969 mm | 13'0" |
| ** 13 Height: overall | 5076 mm | 16'7" | 5147 mm | 16'10" | 5273 mm | 17'3" |
| * 14 Reach: bucket at 45° | 1024 mm | 3'4" | 1064 mm | 3'5" | 1146 mm | 3'9" |
| 15 Carry height: bucket pin | 458 mm | 1'6" | 458 mm | 1'6" | 467 mm | 1'6" |
| ** 16 Dig depth | 100 mm | 3.9" | 100 mm | 3.9" | 101 mm | 3.9" |
| 17 Width: bucket | 2550 mm | 8'4" | 2550 mm | 8'4" | 2750 mm | 9'0" |
| 18 Width: tread center | 1930 mm | 6'3" | 1930 mm | 6'3" | 2065 mm | 6'9" |
| 19 Turning radius: over bucket | 5924 mm | 19'5" | 5945 mm | 19'6" | 6133 mm | 20'1" |
| 20 Width: over tires | 2540 mm | 8'4" | 2540 mm | 8'4" | 2675 mm | 8'9" |
| 21 Turning radius: outside of tires | 5402 mm | 17'8" | 5402 mm | 17'8" | 5537 mm | 18'1" |
| 22 Turning radius: inside of tires | 2851 mm | 9'4" | 2851 mm | 9'4" | 2852 mm | 9'4" |
| 23 Rack angle at full lift | 54° | | 54° | | 54° | |
| 24 Dump angle at full lift | 50° | | 49° | | 49° | |
| 25 Rack angle at carry | 45° | | 45° | | 45° | |
| 26 Departure angle | 33° | | 33° | | 33° | |
| 27 Articulation angle | 40° | | 40° | | 40° | |

Operating weight 12 868 kg 28,360 lb 13 829 kg 30,479 lb 15 928 kg 35,104 lb

*Vary with bucket.

**Vary with tire.

Dimensions listed are for a machine configured with general purpose Fusion bucket, bolt-on cutting edge, counterweights, additional guarding, 80 kg (176 lb) operator and Michelin 20.5 R25 (L-3) XHA2 tires.

Dimensions with Bucket

| | High Lift | | | | | |
|-------------------------------------|-----------|-----------|-----------|-----------|-----------|-----------|
| | 924K | | 930K | | 938K | |
| ** 1 Height: ground to cab | 3340 mm | 10'11" | 3340 mm | 10'11" | 3340 mm | 10'11" |
| ** 2 Height: ground to beacon | 3669 mm | 12'0" | 3669 mm | 12'0" | 3669 mm | 12'0" |
| ** 3 Height: ground axle center | 685 mm | 2'2" | 685 mm | 2'2" | 685 mm | 2'2" |
| ** 4 Height: ground clearance | 400 mm | 1'3" | 400 mm | 1'3" | 390 mm | 1'3" |
| * 5 Length: overall | 8093 mm | 26'6" | 8324 mm | 27'3" | 8397 mm | 27'6" |
| 6 Length: rear axle to bumper | 1986 mm | 6'6" | 1993 mm | 6'6" | 1968 mm | 6'5" |
| 7 Length: hitch to front axle | 1500 mm | 4'11" | 1500 mm | 4'11" | 1525 mm | 5'0" |
| 8 Length: wheel base | 3000 mm | 9'10" | 3000 mm | 9'10" | 3050 mm | 10'0" |
| * 9 Clearance: bucket at 45° | 3378 mm | 11'0" | 3421 mm | 11'2" | 3415 mm | 11'2" |
| ** 10 Clearance: load over height | 3550 mm | 11'7" | 3540 mm | 11'7" | 3561 mm | 11'8" |
| ** 11 Clearance: level bucket | 4073 mm | 13'4" | 4173 mm | 13'8" | 4222 mm | 13'10" |
| ** 12 Height: bucket pin | 4400 mm | 14'5" | 4500 mm | 14'9" | 4550 mm | 14'11" |
| ** 13 Height: overall | 5569 mm | 18'3" | 5740 mm | 18'9" | 5853 mm | 19'2" |
| * 14 Reach: bucket at 45° | 1261 mm | 4'1" | 1385 mm | 4'6" | 1413 mm | 4'7" |
| 15 Carry height: bucket pin | 649 mm | 2'1" | 692 mm | 2'3" | 686 mm | 2'2" |
| ** 16 Dig depth | 135 mm | 5.3" | 135 mm | 5.3" | 135 mm | 5.3" |
| 17 Width: bucket | 2550 mm | 8'4" | 2550 mm | 8'4" | 2750 mm | 9'0" |
| 18 Width: tread center | 1930 mm | 6'3" | 1930 mm | 6'3" | 2065 mm | 6'9" |
| 19 Turning radius: over bucket | 6234 mm | 20'5" | 6329 mm | 20'9" | 6490 mm | 21'3" |
| 20 Width: over tires | 2540 mm | 8'4" | 2540 mm | 8'4" | 2675 mm | 8'9" |
| 21 Turning radius: outside of tires | 5402 mm | 17'8" | 5402 mm | 17'8" | 5537 mm | 18'1" |
| 22 Turning radius: inside of tires | 2851 mm | 9'4" | 2851 mm | 9'4" | 2852 mm | 9'4" |
| 23 Rack angle at full lift | 51° | | 53° | | 53° | |
| 24 Dump angle at full lift | 49° | | 48° | | 47° | |
| 25 Rack angle at carry | 49° | | 50° | | 50° | |
| 26 Departure angle | 33° | | 33° | | 33° | |
| 27 Articulation angle | 40° | | 40° | | 40° | |
| Operating weight | 13 166 kg | 29,018 lb | 14 077 kg | 31,024 lb | 16 177 kg | 35,653 lb |

*Vary with bucket.

**Vary with tire.

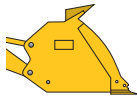
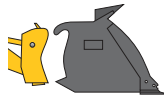

Dimensions listed are for a machine configured with general purpose Fusion bucket, bolt-on cutting edge, counterweights, additional guarding, 80 kg (176 lb) operator and Michelin 20.5 R25 (L-3) XHA2 tires.

Supplemental Operating Data – Tires

| | 924K | | | | 930K | | | | 938K | | | |
|----------------------------------|------------|-------|----------------|--------|------------|-------|---------------|--------|------------|-------|-------------------|--------|
| | 550/65 R25 | | 17.5 R25 (L-2) | | 600/65 R25 | | 20.5R25 (L-5) | | 650/65 R25 | | Flexport (Gen II) | |
| | mm | in | mm | in | mm | in | mm | in | mm | in | mm | in |
| Vertical heights | -70 | -2.8" | -99 | -3.9" | -55 | -2.2" | +15 | +0.6" | -35 | -1.4" | +59 | +2.3" |
| Reach: bucket at 45° | +43 | +1.7" | +75 | +3" | +29 | +1.1" | -21 | -0.8" | -5 | -0.2" | -23 | -0.9" |
| Width: over tires | +21 | +0.8" | -69 | -2.7" | +98 | +3.9" | 0 | 0" | +121 | +4.8" | +65 | +2.6" |
| Turning radius: outside of tires | +4 | +0.2" | -45 | -1.8" | +42 | +1.7" | +1 | 0" | +53 | +2.1" | +61 | +2.4" |
| Turning radius: inside of tires | -11 | -0.4" | 35 | +1.4" | -49 | -1.9" | 0 | 0" | -61 | -2.4" | -33 | -1.3" |
| | kg | lb | kg | lb | kg | lb | kg | lb | kg | lb | kg | lb |
| Tipping load – straight | -83 | -182 | -348 | -767 | +9 | +19 | +444 | +978 | +137 | +301 | +1864 | +4,108 |
| Tipping load – full turn | -72 | -157 | -301 | -663 | +8 | +17 | +384 | +846 | +118 | +260 | +1612 | +3,552 |
| Operating weight | -126 | -277 | -530 | -1,167 | +14 | +30 | +678 | +1,494 | +210 | +462 | +2866 | +6,316 |

Bucket Specifications

924K Operating Specifications with Buckets

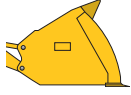

| | | General Purpose | | | | | | | | |
|--|--------------------|--|--------|--------|--|--------|--------|---|--------|--|
| | |  Pin On | | |  Fusion | | |  ISO 23727 | | |
| Rated capacity | m ³ | 1.9 | 2.1 | 2.3 | 1.9 | 2.1 | 2.3 | 2.1 | 2.3 | |
| | yd ³ | 2.5 | 2.7 | 3.0 | 2.5 | 2.7 | 3.0 | 2.7 | 3.0 | |
| Struck capacity | m ³ | 1.7 | 1.9 | 2.1 | 1.7 | 1.9 | 2.1 | 2.0 | 2.2 | |
| | yd ³ | 2.2 | 2.5 | 2.7 | 2.2 | 2.5 | 2.7 | 2.6 | 2.9 | |
| Width: bucket | mm | 2550 | 2550 | 2550 | 2550 | 2550 | 2550 | 2550 | 2550 | |
| | ft/in | 8'4" | 8'4" | 8'4" | 8'4" | 8'4" | 8'4" | 8'4" | 8'4" | |
| Nominal material density, 100% fill factor | kg/m ³ | 2048 | 1834 | 1658 | 1952 | 1748 | 1580 | 1682 | 1520 | |
| | lb/yd ³ | 3,430 | 3,144 | 2,801 | 3,270 | 2,996 | 2,670 | 2,882 | 2,568 | |
| Clearance: full lift, 45° dump | mm | 2912 | 2855 | 2807 | 2885 | 2828 | 2779 | 2747 | 2698 | |
| | ft/in | 9'6" | 9'4" | 9'2" | 9'5" | 9'3" | 9'1" | 9'0" | 8'10" | |
| Reach: full lift, 45° dump | mm | 992 | 1033 | 1070 | 1024 | 1064 | 1102 | 1168 | 1205 | |
| | ft/in | 3'3" | 3'4" | 3'6" | 3'4" | 3'5" | 3'7" | 3'9" | 3'11" | |
| Reach: 2130 mm (7'0") clearance, 45° dump | mm | 1547 | 1560 | 1573 | 1566 | 1578 | 1590 | 1639 | 1648 | |
| | ft/in | 5'0" | 5'1" | 5'1" | 5'1" | 5'2" | 5'2" | 5'4" | 5'4" | |
| Reach: level arm, level bucket | mm | 2278 | 2350 | 2413 | 2320 | 2392 | 2455 | 2523 | 2586 | |
| | ft/in | 7'5" | 7'8" | 7'11" | 7'7" | 7'10" | 8'0" | 8'3" | 8'5" | |
| Dig depth | mm | 100 | 100 | 100 | 100 | 100 | 100 | 93 | 93 | |
| | in | 3.9" | 3.9" | 3.9" | 3.9" | 3.9" | 3.9" | 3.7" | 3.7" | |
| Length: overall | mm | 7409 | 7481 | 7544 | 7451 | 7523 | 7586 | 7648 | 7711 | |
| | ft/in | 24'3" | 24'6" | 24'9" | 24'5" | 24'8" | 24'10" | 25'1" | 25'3" | |
| Height: overall | mm | 5052 | 5122 | 5180 | 5076 | 5147 | 5205 | 5236 | 5294 | |
| | ft/in | 16'6" | 16'9" | 16'11" | 16'7" | 16'10" | 17'0" | 17'2" | 17'4" | |
| Turning radius, bucket at carry | mm | 5912 | 5933 | 5951 | 5924 | 5945 | 5964 | 5964 | 5984 | |
| | ft/in | 19'4" | 19'5" | 19'6" | 19'5" | 19'6" | 19'6" | 19'6" | 19'7" | |
| Tipping load – straight, ISO 14397-1* | kg | 9029 | 8942 | 8860 | 8644 | 8560 | 8480 | 8235 | 8157 | |
| | lb | 19,899 | 19,708 | 19,527 | 19,051 | 18,865 | 18,690 | 18,150 | 17,978 | |
| Tipping load – straight, rigid tire** | kg | 9405 | 9315 | 9229 | 9004 | 8916 | 8833 | 8578 | 8497 | |
| | lb | 20,728 | 20,530 | 20,340 | 19,845 | 19,651 | 19,468 | 18,906 | 18,727 | |
| Tipping load – full turn, ISO 14397-1* | kg | 7783 | 7702 | 7626 | 7419 | 7341 | 7268 | 7062 | 6990 | |
| | lb | 17,152 | 16,975 | 16,808 | 16,352 | 16,180 | 16,018 | 15,565 | 15,406 | |
| Tipping load – full turn, rigid tire** | kg | 8279 | 8194 | 8113 | 7893 | 7810 | 7732 | 7513 | 7437 | |
| | lb | 18,247 | 18,059 | 17,881 | 17,396 | 17,212 | 17,040 | 16,559 | 16,390 | |
| Breakout force | kg | 10 685 | 9956 | 9388 | 10 223 | 9547 | 9019 | 8451 | 8020 | |
| | lb | 23,550 | 21,943 | 20,691 | 22,531 | 21,041 | 19,876 | 18,625 | 17,675 | |
| Operating weight | kg | 12 527 | 12 571 | 12 609 | 12 868 | 12 912 | 12 950 | 12 859 | 12 897 | |
| | lb | 27,608 | 27,706 | 27,790 | 28,360 | 28,458 | 28,541 | 28,342 | 28,426 | |

*Full compliance to ISO 14397-1 (2007) Sections 1 through 6, which requires 2% verification between calculation and testing.

**Compliance to ISO 14397-1 (2007) Sections 1 through 5.

Dimensions listed are for a 924K configured with bucket, bolt-on cutting edge, standard counterweights, additional guarding, 80 kg (176 lb) operator, and Michelin 20.5 R25 (L-3) XHA2 tires at a pressure of 4.14 bar (60 psi) in the front tires and 2.76 bar (40 psi) in the rear tires.

924K Operating Specifications with Buckets

| | | Light Material | | | | | | High Lift |
|--|--------------------|---|--------|--------|---|--------|--------|-----------|
| | |  Pin On | | |  Fusion | | | |
| Rated capacity | m ³ | 3.5 | 4.2 | 5.0 | 3.5 | 4.2 | 5.0 | – |
| | yd ³ | 4.6 | 5.5 | 6.5 | 4.6 | 5.5 | 6.5 | – |
| Struck capacity | m ³ | 3.3 | 4.0 | 4.8 | 3.3 | 4.0 | 4.8 | – |
| | yd ³ | 4.3 | 5.2 | 6.3 | 4.3 | 5.2 | 6.3 | – |
| Width: bucket | mm | 2750 | 2750 | 2750 | 2750 | 2750 | 2750 | – |
| | ft/in | 9'0" | 9'0" | 9'0" | 9'0" | 9'0" | 9'0" | – |
| Nominal material density, 100% fill factor | kg/m ³ | 1030 | 829 | 693 | 979 | 787 | 658 | – |
| | lb/yd ³ | 1,727 | 1,395 | 1174 | 1,642 | 1,324 | 1115 | – |
| Clearance: full lift, 45° dump | mm | 2629 | 2509 | 2509 | 2600 | 2479 | 2479 | +493 |
| | ft/in | 8'7" | 8'2" | 8'2" | 8'6" | 8'1" | 8'1" | +1'7" |
| Reach: full lift, 45° dump | mm | 1137 | 1257 | 1257 | 1166 | 1286 | 1286 | +237 |
| | ft/in | 3'8" | 4'1" | 4'1" | 3'9" | 4'2" | 4'2" | +9" |
| Reach: 2130 mm (7'0") clearance, 45° dump | mm | 1538 | 1579 | 1579 | 1549 | 1588 | 1588 | +572 |
| | ft/in | 5'0" | 5'2" | 5'2" | 5'0" | 5'2" | 5'2" | +1'10" |
| Reach: level arm, level bucket | mm | 2603 | 2773 | 2773 | 2645 | 2815 | 2815 | +523 |
| | ft/in | 8'6" | 9'1" | 9'1" | 8'8" | 9'2" | 9'2" | +1'8" |
| Dig depth | mm | 100 | 100 | 100 | 100 | 100 | 100 | +35 |
| | in | 3.9" | 3.9" | 3.9" | 3.9" | 3.9" | 3.9" | +1.4" |
| Length: overall | mm | 7734 | 7904 | 7904 | 7776 | 7946 | 7946 | +642 |
| | ft/in | 25'4" | 25'11" | 25'11" | 25'6" | 26'0" | 26'0" | +2'1" |
| Height: overall | mm | 5284 | 5445 | 5725 | 5309 | 5471 | 5752 | +493 |
| | ft/in | 17'4" | 17'10" | 18'9" | 17'5" | 17'11" | 18'10" | +1'7" |
| Turning radius, bucket at carry | mm | 6099 | 6152 | 6152 | 6112 | 6166 | 6166 | +311 |
| | ft/in | 20'0" | 20'2" | 20'2" | 20'0" | 20'2" | 20'2" | +1'0" |
| Tipping load – straight, ISO 14397-1* | kg | 8418 | 8149 | 8116 | 8040 | 7776 | 7745 | –2145 |
| | lb | 18,553 | 17,959 | 17,887 | 17,720 | 17,138 | 17,070 | –4,726 |
| Tipping load – straight, rigid tire** | kg | 8769 | 8488 | 8454 | 8375 | 8100 | 8068 | –2234 |
| | lb | 19,326 | 18,708 | 18,632 | 18,459 | 17,852 | 17,781 | –4,923 |
| Tipping load – full turn, ISO 14397-1* | kg | 7210 | 6962 | 6927 | 6853 | 6609 | 6577 | –1892 |
| | lb | 15,890 | 15,343 | 15,267 | 15,104 | 14,567 | 14,496 | –4,170 |
| Tipping load – full turn, rigid tire** | kg | 7670 | 7406 | 7369 | 7291 | 7031 | 6997 | –2013 |
| | lb | 16,905 | 16,322 | 16,242 | 16,068 | 15,497 | 15,421 | –4,436 |
| Breakout force | kg | 7888 | 6893 | 6842 | 7603 | 6660 | 6611 | –494 |
| | lb | 17,385 | 15,192 | 15,080 | 16,757 | 14,678 | 14,571 | –1,089 |
| Operating weight | kg | 12 925 | 13 062 | 13 132 | 13 275 | 13 415 | 13 480 | +299 |
| | lb | 28,487 | 28,789 | 28,943 | 29,258 | 29,566 | 29,709 | +659 |

*Full compliance to ISO 14397-1 (2007) Sections 1 through 6, which requires 2% verification between calculation and testing.

**Compliance to ISO 14397-1 (2007) Sections 1 through 5.

Dimensions listed are for a 924K configured with bucket, bolt-on cutting edge, standard counterweights, additional guarding, 80 kg (176 lb) operator, and Michelin 20.5 R25 (L-3) XHA2 tires at a pressure of 4.14 bar (60 psi) in the front tires and 2.76 bar (40 psi) in the rear tires.

Bucket Specifications

924K Bucket Selection Table

| Bucket Fill Factor | | kg/m ³ | 1375 | 1450 | 1525 | 1600 | 1675 | 1750 | 1825 | 1900 | 1975 | 2050 | 2125 | High Lift | | |
|--------------------|--------|--------------------|-----------------|-------|-------|-------|-------|-------|-------|-------|-------|-------|-------|-------------------|--------------------|------|
| | | lb/yd ³ | 2,317 | 2,443 | 2,570 | 2,696 | 2,822 | 2,949 | 3,075 | 3,202 | 3,328 | 3,454 | 3,581 | | | |
| | | m ³ | yd ³ | | | | | | | | | | | kg/m ³ | lb/yd ³ | |
| General Purpose | Pin On | 1.9 | 2.5 | | | | | | | 112% | 108% | 104% | 100% | 96% | -501 | -845 |
| | | 2.1 | 2.7 | | | 115% | 109% | 105% | 100% | 97% | | | | | -451 | -759 |
| | | 2.3 | 3.0 | | 114% | 109% | 104% | 99% | 95% | | | | | | -408 | -688 |
| | Fusion | 1.9 | 2.5 | | | | | | 112% | 107% | 103% | 99% | 95% | | -494 | -833 |
| | | 2.1 | 2.7 | | | 115% | 109% | 104% | 100% | 96% | | | | | -444 | -748 |
| | | 2.3 | 3.0 | 115% | 109% | 104% | 99% | 94% | | | | | | | -403 | -679 |

| Bucket Fill Factor | | kg/m ³ | 600 | 650 | 700 | 750 | 800 | 850 | 900 | 950 | 1000 | 1050 | 1100 | High Lift | |
|--------------------|--------|--------------------|-----------------|-------|-------|-------|-------|-------|-------|-------|-------|-------|-------|-------------------|--------------------|
| | | lb/yd ³ | 1,011 | 1,095 | 1,180 | 1,264 | 1,348 | 1,432 | 1,517 | 1,601 | 1,685 | 1,769 | 1,854 | | |
| | | m ³ | yd ³ | | | | | | | | | | | kg/m ³ | lb/yd ³ |
| Light Material | Pin On | 3.5 | 4.6 | | | | | | 114% | 108% | 103% | 98% | | -262 | -442 |
| | | 4.2 | 5.5 | | | 111% | 104% | 98% | | | | | | -214 | -360 |
| | | 5.0 | 6.5 | | 107% | 99% | | | | | | | | | -181 |
| | Fusion | 3.5 | 4.6 | | | | | | 109% | 103% | 98% | | | -259 | -436 |
| | | 4.2 | 5.5 | | | 112% | 105% | 98% | | | | | | -211 | -356 |
| | | 5.0 | 6.5 | 110% | 101% | | | | | | | | | | -178 |

Material density and fill factor are key variables when choosing the appropriate size of the bucket. The long floor and open throat design of the Performance Series Buckets along with the aggressive rack angles of the optimized K Series linkage will demonstrate fill factors greater than 100% ISO rated. Refer to the Fill Factors table for expected fill factor per material density and Bucket Selection Table for bucket sizing.

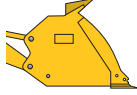


924K Fill Factors

| Materials | Density | Fill % |
|-----------------|--------------------------|----------------------------|
| Earth and rock | ~ 1800 kg/m ³ | ~ 3,033 lb/yd ³ |
| Sand and gravel | ~ 1700 kg/m ³ | ~ 2,865 lb/yd ³ |
| Aggregates | ~ 1600 kg/m ³ | ~ 2,696 lb/yd ³ |
| Bulk grains | ~ 750 kg/m ³ | ~ 1,264 lb/yd ³ |
| Woodchips | ~ 500 kg/m ³ | ~ 843 lb/yd ³ |

924K Ground Engagement Options

| | Long Teeth and Segments | | Short Teeth and Segments | |
|--------------------------|-------------------------|---------|--------------------------|---------|
| Dig depth | +12 mm | +0.5 in | +5 mm | +0.2 in |
| Length: overall | +146 mm | +5.7 in | +121 mm | +4.8 in |
| Dump clearance | -103 mm | -4.1 in | -82 mm | -3.2 in |
| Reach | +104 mm | +4.1 in | +89 mm | +3.5 in |
| Tipping load – straight | -148 kg | -325 lb | -142 kg | -311 lb |
| Tipping load – full turn | -145 kg | -318 lb | -139 kg | -305 lb |
| Breakout force | -121 kg | -266 lb | -115 kg | -254 lb |
| Operating weight | +120 kg | +264 lb | +116 kg | +255 lb |

930K Operating Specifications with Buckets

| | | General Purpose | | | | | | | | |
|--|--------------------|--|--------|--------|--|--------|--------|---|--------|--|
| | |  Pin On | | |  Fusion | | |  ISO 23727 | | |
| Rated capacity | m ³ | 2.1 | 2.3 | 2.5 | 2.1 | 2.3 | 2.5 | 2.3 | 2.5 | |
| | yd ³ | 2.7 | 3.0 | 3.3 | 2.7 | 3.0 | 3.3 | 3.0 | 3.3 | |
| Struck capacity | m ³ | 1.9 | 2.1 | 2.3 | 1.9 | 2.1 | 2.3 | 2.2 | 2.4 | |
| | yd ³ | 2.5 | 2.7 | 3.0 | 2.5 | 2.7 | 3.0 | 2.9 | 3.1 | |
| Width: bucket | mm | 2550 | 2550 | 2550 | 2550 | 2550 | 2550 | 2550 | 2750 | |
| | ft/in | 8'4" | 8'4" | 8'4" | 8'4" | 8'4" | 8'4" | 8'4" | 9'0" | |
| Nominal material density, 100% fill factor | kg/m ³ | 2082 | 1883 | 1706 | 1993 | 1802 | 1631 | 1734 | 1576 | |
| | lb/yd ³ | 3,568 | 3,182 | 2,849 | 3,416 | 3,045 | 2,722 | 2,929 | 2,632 | |
| Clearance: full lift, 45° dump | mm | 2855 | 2807 | 2761 | 2828 | 2779 | 2733 | 2698 | 2698 | |
| | ft/in | 9'4" | 9'2" | 9'0" | 9'3" | 9'1" | 8'11" | 8'10" | 8'10" | |
| Reach: full lift, 45° dump | mm | 1033 | 1070 | 1109 | 1064 | 1102 | 1140 | 1205 | 1205 | |
| | ft/in | 3'4" | 3'6" | 3'7" | 3'5" | 3'7" | 3'8" | 3'11" | 3'11" | |
| Reach: 2130 mm (7'0") clearance, 45° dump | mm | 1560 | 1573 | 1587 | 1578 | 1590 | 1603 | 1648 | 1648 | |
| | ft/in | 5'1" | 5'1" | 5'2" | 5'2" | 5'2" | 5'3" | 5'4" | 5'4" | |
| Reach: level arm, level bucket | mm | 2350 | 2413 | 2475 | 2392 | 2455 | 2517 | 2586 | 2586 | |
| | ft/in | 7'8" | 7'11" | 8'1" | 7'10" | 8'0" | 8'3" | 8'5" | 8'5" | |
| Dig depth | mm | 100 | 100 | 100 | 100 | 100 | 100 | 93 | 93 | |
| | in | 3.9" | 3.9" | 3.9" | 3.9" | 3.9" | 3.9" | 3.7" | 3.7" | |
| Length: overall | mm | 7488 | 7551 | 7613 | 7530 | 7593 | 7655 | 7718 | 7718 | |
| | ft/in | 24'6" | 24'9" | 24'11" | 24'8" | 24'10" | 25'1" | 25'3" | 25'3" | |
| Height: overall | mm | 5122 | 5180 | 5239 | 5147 | 5205 | 5264 | 5294 | 5294 | |
| | ft/in | 16'9" | 16'11" | 17'2" | 16'10" | 17'0" | 17'3" | 17'4" | 17'4" | |
| Turning radius, bucket at carry | mm | 5933 | 5951 | 5970 | 5945 | 5964 | 5983 | 5984 | 6075 | |
| | ft/in | 19'5" | 19'6" | 19'7" | 19'6" | 19'6" | 19'7" | 19'7" | 19'11" | |
| Tipping load – straight, ISO 14397-1* | kg | 10 202 | 10 114 | 9976 | 9803 | 9718 | 9571 | 9349 | 9252 | |
| | lb | 22,484 | 22,290 | 21,986 | 21,605 | 21,418 | 21,095 | 20,604 | 20,391 | |
| Tipping load – straight, rigid tire** | kg | 10 627 | 10 535 | 10 391 | 10 212 | 10 123 | 9970 | 9738 | 9637 | |
| | lb | 23,421 | 23,219 | 22,902 | 22,506 | 22,310 | 21,974 | 21,463 | 21,240 | |
| Tipping load – full turn, ISO 14397-1* | kg | 8743 | 8662 | 8532 | 8369 | 8291 | 8153 | 7975 | 7881 | |
| | lb | 19,269 | 19,091 | 18,805 | 18,444 | 18,272 | 17,968 | 17,576 | 17,368 | |
| Tipping load – full turn, rigid tire** | kg | 9301 | 9215 | 9077 | 8903 | 8820 | 8673 | 8484 | 8384 | |
| | lb | 20,499 | 20,310 | 20,005 | 19,621 | 19,438 | 19,115 | 18,698 | 18,477 | |
| Breakout force | kg | 12 881 | 12 158 | 11 488 | 12 366 | 11 693 | 11 063 | 10 432 | 10 375 | |
| | lb | 28,388 | 26,796 | 25,318 | 27,254 | 25,772 | 24,382 | 22,991 | 22,867 | |
| Operating weight | kg | 13 488 | 13 526 | 13 625 | 13 829 | 13 867 | 13 978 | 13 815 | 13 918 | |
| | lb | 29,727 | 29,811 | 30,029 | 30,479 | 30,562 | 30,808 | 30,447 | 30,674 | |

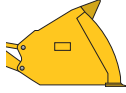
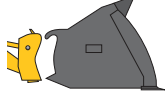
*Full compliance to ISO 14397-1 (2007) Sections 1 through 6, which requires 2% verification between calculation and testing.

**Compliance to ISO 14397-1 (2007) Sections 1 through 5.

Dimensions listed are for a 930K configured with bucket, bolt-on cutting edge, heavy counterweights, additional guarding, 80 kg (176 lb) operator, and Michelin 20.5 R25 (L-3) XHA2 tires at a pressure of 4.14 bar (60 psi) in the front tires and 2.76 bar (40 psi) in the rear tires.

Bucket Specifications

930K Operating Specifications with Buckets

| | | Light Material | | | | | | High Lift |
|--|--------------------|---|--------|--------|---|--------|--------|-----------|
| | |  Pin On | | |  Fusion | | | |
| Rated capacity | m ³ | 3.5 | 4.2 | 5.0 | 3.5 | 4.2 | 5.0 | – |
| | yd ³ | 4.6 | 5.5 | 6.5 | 4.6 | 5.5 | 6.5 | – |
| Struck capacity | m ³ | 3.3 | 4.0 | 4.8 | 3.3 | 4.0 | 4.8 | – |
| | yd ³ | 4.3 | 5.2 | 6.3 | 4.3 | 5.2 | 6.3 | – |
| Width: bucket | mm | 2750 | 2750 | 2750 | 2750 | 2750 | 2750 | – |
| | ft/in | 9'0" | 9'0" | 9'0" | 9'0" | 9'0" | 9'0" | – |
| Nominal material density, 100% fill factor | kg/m ³ | 1176 | 948 | 793 | 1123 | 905 | 757 | – |
| | lb/yd ³ | 1972 | 1,596 | 1,345 | 1883 | 1,523 | 1,284 | – |
| Clearance: full lift, 45° dump | mm | 2629 | 2509 | 2509 | 2600 | 2479 | 2479 | +593 |
| | ft/in | 8'7" | 8'2" | 8'2" | 8'6" | 8'1" | 8'1" | +1'11" |
| Reach: full lift, 45° dump | mm | 1137 | 1257 | 1257 | 1166 | 1286 | 1286 | +320 |
| | ft/in | 3'8" | 4'1" | 4'1" | 3'9" | 4'2" | 4'2" | +1'0" |
| Reach: 2130 mm (7'0") clearance, 45° dump | mm | 1538 | 1579 | 1579 | 1549 | 1588 | 1588 | +717 |
| | ft/in | 5'0" | 5'2" | 5'2" | 5'0" | 5'2" | 5'2" | +2'4" |
| Reach: level arm, level bucket | mm | 2603 | 2773 | 2773 | 2645 | 2815 | 2815 | +653 |
| | ft/in | 8'6" | 9'1" | 9'1" | 8'8" | 9'2" | 9'2" | +2'1" |
| Dig depth | mm | 100 | 100 | 100 | 100 | 100 | 100 | +35 |
| | in | 3.9" | 3.9" | 3.9" | 3.9" | 3.9" | 3.9" | +1.4" |
| Length: overall | mm | 7741 | 7911 | 7911 | 7783 | 7953 | 7953 | +794 |
| | ft/in | 25'4" | 25'11" | 25'11" | 25'6" | 26'1" | 26'1" | +2'7" |
| Height: overall | mm | 5284 | 5445 | 5725 | 5309 | 5471 | 5752 | +593 |
| | ft/in | 17'4" | 17'10" | 18'9" | 17'5" | 17'11" | 18'10" | +1'11" |
| Turning radius, bucket at carry | mm | 6099 | 6152 | 6152 | 6112 | 6166 | 6166 | +384 |
| | ft/in | 20'0" | 20'2" | 20'2" | 20'0" | 20'2" | 20'2" | +1'3" |
| Tipping load – straight, ISO 14397-1* | kg | 9652 | 9365 | 9334 | 9259 | 8977 | 8948 | –2795 |
| | lb | 21,273 | 20,640 | 20,572 | 20,406 | 19,785 | 19,722 | –6,160 |
| Tipping load – straight, rigid tire** | kg | 10 054 | 9755 | 9723 | 9645 | 9351 | 9321 | –2912 |
| | lb | 22,159 | 21,500 | 21,429 | 21,256 | 20,609 | 20,543 | –6,417 |
| Tipping load – full turn, ISO 14397-1* | kg | 8230 | 7966 | 7934 | 7860 | 7602 | 7571 | –2452 |
| | lb | 18,138 | 17,557 | 17,486 | 17,323 | 16,754 | 16,687 | –5,404 |
| Tipping load – full turn, rigid tire** | kg | 8755 | 8475 | 8440 | 8362 | 8087 | 8055 | –2609 |
| | lb | 19,296 | 18,678 | 18,602 | 18,429 | 17,823 | 17,752 | –5,749 |
| Breakout force | kg | 10 277 | 9020 | 8969 | 9921 | 8730 | 8682 | –299 |
| | lb | 22,649 | 19,879 | 19,767 | 21,864 | 19,240 | 19,134 | –658 |
| Operating weight | kg | 13 842 | 13 979 | 14 049 | 14 192 | 14 332 | 14 397 | +247 |
| | lb | 30,508 | 30,810 | 30,965 | 31,280 | 31,587 | 31,731 | +544 |

*Full compliance to ISO 14397-1 (2007) Sections 1 through 6, which requires 2% verification between calculation and testing.

**Compliance to ISO 14397-1 (2007) Sections 1 through 5.

Dimensions listed are for a 930K configured with bucket, bolt-on cutting edge, heavy counterweights, additional guarding, 80 kg (176 lb) operator, and Michelin 20.5 R25 (L-3) XHA2 tires at a pressure of 4.14 bar (60 psi) in the front tires and 2.76 bar (40 psi) in the rear tires.

930K Bucket Selection Table

| Bucket Fill Factor | | kg/m ³ | 1375 | 1450 | 1525 | 1600 | 1675 | 1750 | 1825 | 1900 | 1975 | 2050 | 2125 | 2200 | High Lift |
|--------------------|--------|--------------------------------|-------|-------|-------|-------|-------|-----------|-----------|-------|-----------|-----------|-------|-----------|--------------------------------------|
| | | lb/yd ³ | 2,317 | 2,443 | 2,570 | 2,696 | 2,822 | 2,949 | 3,075 | 3,202 | 3,328 | 3,454 | 3,581 | 3,707 | |
| | | m ³ yd ³ | | | | | | | | | | | | | kg/m ³ lb/yd ³ |
| General Purpose | Pin On | 2.1 2.7 | | | | | | | | 114% | 110% | 105% | 102% | 98% | -588 -992 |
| | | 2.3 3.0 | | | | | 112% | 108% | 103% | 99% | 95% | -533 -898 | | | |
| | | 2.5 3.3 | | | 112% | 107% | 102% | 98% | -487 -821 | | | | | | |
| | Fusion | 2.1 2.7 | | | | | | | 114% | 109% | 105% | 101% | 97% | -580 -977 | |
| | | 2.3 3.0 | | | | 113% | 108% | 103% | 99% | 95% | -525 -885 | | | | |
| | | 2.5 3.3 | | 112% | 107% | 102% | 97% | -480 -809 | | | | | | | |

| Bucket Fill Factor | | kg/m ³ | 700 | 750 | 800 | 850 | 900 | 950 | 1000 | 1050 | 1100 | 1150 | 1200 | 1250 | High Lift | |
|--------------------|--------|--------------------------------|-------|-------|-------|-----------|-------|-------|-----------|-----------|-------|-------|-----------|-------|--------------------------------------|-----------|
| | | lb/yd ³ | 1,180 | 1,264 | 1,348 | 1,432 | 1,517 | 1,601 | 1,685 | 1,769 | 1,854 | 1,938 | 2,022 | 2,106 | | |
| | | m ³ yd ³ | | | | | | | | | | | | | kg/m ³ lb/yd ³ | |
| Light Material | Pin On | 3.5 4.6 | | | | | | | | | 112% | 107% | 102% | 98% | 94% | -341 -575 |
| | | 4.2 5.5 | | | | 112% | 105% | 100% | 95% | -278 -468 | | | | | | |
| | | 5.0 6.5 | 113% | 106% | 99% | -234 -395 | | | | | | | | | | |
| | Fusion | 3.5 4.6 | | | | | | | 112% | 107% | 102% | 98% | -337 -568 | | | |
| | | 4.2 5.5 | | | 113% | 106% | 101% | 95% | -274 -462 | | | | | | | |
| | | 5.0 6.5 | 108% | 101% | 95% | -231 -389 | | | | | | | | | | |

Material density and fill factor are key variables when choosing the appropriate size of the bucket. The long floor and open throat design of the Performance Series Buckets along with the aggressive rack angles of the optimized K Series linkage will demonstrate fill factors greater than 100% ISO rated. Refer to the Fill Factors table for expected fill factor per material density and Bucket Selection Table for bucket sizing.

930K Fill Factors

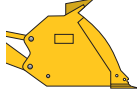


| Materials | Density | Fill % |
|-----------------|--------------------------|----------------------------|
| Earth and rock | ~ 1800 kg/m ³ | ~ 3,033 lb/yd ³ |
| Sand and gravel | ~ 1700 kg/m ³ | ~ 2,865 lb/yd ³ |
| Aggregates | ~ 1600 kg/m ³ | ~ 2,696 lb/yd ³ |
| Bulk grains | ~ 750 kg/m ³ | ~ 1,264 lb/yd ³ |
| Woodchips | ~ 500 kg/m ³ | ~ 843 lb/yd ³ |

930K Ground Engagement Options

| | Long Teeth and Segments | | Short Teeth and Segments | |
|--------------------------|-------------------------|---------|--------------------------|---------|
| Dig depth | +11 mm | +0.4 in | +5 mm | +0.2 in |
| Length: overall | +146 mm | +5.7 in | +121 mm | +4.8 in |
| Dump clearance | -104 mm | -4.1 in | -83 mm | -3.3 in |
| Reach | +103 mm | +4.1 in | +88 mm | +3.5 in |
| Tipping load – straight | -150 kg | -329 lb | -143 kg | -315 lb |
| Tipping load – full turn | -146 kg | -322 lb | -140 kg | -309 lb |
| Breakout force | -121 kg | -266 lb | -115 kg | -254 lb |
| Operating weight | +120 kg | +264 lb | +116 kg | +255 lb |

Bucket Specifications

938K Operating Specifications with Buckets

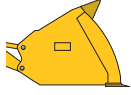

| | | General Purpose | | | | | | | | |
|--|--------------------|---|--------|--------|---|--------|--------|--|--------|--|
| | |  Pin On | | |  Fusion | | |  ISO 23727 | | |
| Rated capacity | m ³ | 2.5 | 2.7 | 2.9 | 2.5 | 2.7 | 2.9 | 2.7 | 2.9 | |
| | yd ³ | 3.3 | 3.5 | 3.8 | 3.3 | 3.5 | 3.8 | 3.5 | 3.8 | |
| Struck capacity | m ³ | 2.3 | 2.5 | 2.7 | 2.3 | 2.5 | 2.7 | 2.6 | 2.7 | |
| | yd ³ | 3.0 | 3.3 | 3.5 | 3.0 | 3.3 | 3.5 | 3.4 | 3.5 | |
| Width: bucket | mm | 2750 | 2750 | 2750 | 2750 | 2750 | 2750 | 2750 | 2750 | |
| | ft/in | 9'0" | 9'0" | 9'0" | 9'0" | 9'0" | 9'0" | 9'0" | 9'0" | |
| Nominal material density, 100% fill factor | kg/m ³ | 1998 | 1834 | 1694 | 1905 | 1748 | 1615 | 1696 | 1567 | |
| | lb/yd ³ | 3,337 | 3,118 | 2,850 | 3,181 | 2,972 | 2,716 | 2,883 | 2,636 | |
| Clearance: full lift, 45° dump | mm | 2869 | 2822 | 2786 | 2834 | 2787 | 2751 | 2712 | 2675 | |
| | ft/in | 9'4" | 9'3" | 9'1" | 9'3" | 9'1" | 9'0" | 8'10" | 8'9" | |
| Reach: full lift, 45° dump | mm | 1108 | 1146 | 1178 | 1146 | 1185 | 1216 | 1280 | 1311 | |
| | ft/in | 3'7" | 3'9" | 3'10" | 3'9" | 3'10" | 3'11" | 4'2" | 4'3" | |
| Reach: 2130 mm (7'0") clearance, 45° dump | mm | 1637 | 1652 | 1664 | 1658 | 1672 | 1684 | 1726 | 1735 | |
| | ft/in | 5'4" | 5'5" | 5'5" | 5'5" | 5'5" | 5'6" | 5'7" | 5'8" | |
| Reach: level arm, level bucket | mm | 2452 | 2514 | 2563 | 2504 | 2566 | 2615 | 2687 | 2736 | |
| | ft/in | 8'0" | 8'2" | 8'4" | 8'2" | 8'5" | 8'6" | 8'9" | 8'11" | |
| Dig depth | mm | 100 | 100 | 100 | 101 | 101 | 101 | 93 | 93 | |
| | in | 3.9" | 3.9" | 3.9" | 4" | 4" | 4" | 3.7" | 3.7" | |
| Length: overall | mm | 7604 | 7666 | 7715 | 7656 | 7718 | 7767 | 7833 | 7882 | |
| | ft/in | 24'11" | 25'1" | 25'3" | 25'1" | 25'3" | 25'5" | 25'8" | 25'10" | |
| Height: overall | mm | 5242 | 5301 | 5348 | 5273 | 5332 | 5379 | 5415 | 5462 | |
| | ft/in | 17'2" | 17'4" | 17'6" | 17'3" | 17'5" | 17'7" | 17'9" | 17'11" | |
| Turning radius, bucket at carry | mm | 6117 | 6136 | 6150 | 6133 | 6152 | 6166 | 6169 | 6185 | |
| | ft/in | 20'0" | 20'1" | 20'2" | 20'1" | 20'2" | 20'2" | 20'2" | 20'3" | |
| Tipping load – straight, ISO 14397-1* | kg | 11 707 | 11 610 | 11 529 | 11 209 | 11 113 | 11 035 | 10 775 | 10 702 | |
| | lb | 25,801 | 25,588 | 25,408 | 24,704 | 24,493 | 24,320 | 23,748 | 23,587 | |
| Tipping load – straight, rigid tire** | kg | 12 194 | 12 094 | 12 009 | 11 676 | 11 576 | 11 494 | 11 224 | 11 148 | |
| | lb | 26,876 | 26,654 | 26,467 | 25,734 | 25,514 | 25,333 | 24,737 | 24,570 | |
| Tipping load – full turn, ISO 14397-1* | kg | 9991 | 9903 | 9828 | 9527 | 9439 | 9367 | 9156 | 9089 | |
| | lb | 22,021 | 21,825 | 21,661 | 20,997 | 20,803 | 20,645 | 20,180 | 20,033 | |
| Tipping load – full turn, rigid tire** | kg | 10 629 | 10 535 | 10 455 | 10 135 | 10 042 | 9965 | 9741 | 9670 | |
| | lb | 23,426 | 23,218 | 23,043 | 22,337 | 22,131 | 21,963 | 21,468 | 21,311 | |
| Breakout force | kg | 13 813 | 13 082 | 12 552 | 13 170 | 12 498 | 12 009 | 11 299 | 10 887 | |
| | lb | 30,442 | 28,833 | 27,665 | 29,027 | 27,546 | 26,467 | 24,902 | 23,993 | |
| Operating weight | kg | 15 523 | 15 568 | 15 604 | 15 928 | 15 972 | 16 008 | 15 858 | 15 892 | |
| | lb | 34,212 | 34,311 | 34,392 | 35,104 | 35,202 | 35,281 | 34,950 | 35,025 | |

*Full compliance to ISO 14397-1 (2007) Sections 1 through 6, which requires 2% verification between calculation and testing.

**Compliance to ISO 14397-1 (2007) Sections 1 through 5.

Dimensions listed are for a 938K configured with bucket, bolt-on cutting edge, heavy counterweights, additional guarding, 80 kg (176 lb) operator, and Michelin 20.5 R25 (L-3) XHA2 tires at a pressure of 4.48 bar (65 psi) in the front tires and 2.76 bar (40 psi) in the rear tires.

938K Operating Specifications with Buckets

| | | Light Material | | | | | | High Lift |
|--|--------------------|---|--------|--------|---|--------|--------|-----------|
| | |  Pin On | | |  Fusion | | | |
| Rated capacity | m ³ | 3.5 | 4.2 | 5.0 | 3.5 | 4.2 | 5.0 | – |
| | yd ³ | 4.6 | 5.5 | 6.5 | 4.6 | 5.5 | 6.5 | – |
| Struck capacity | m ³ | 3.3 | 4.0 | 4.8 | 3.3 | 4.0 | 4.8 | – |
| | yd ³ | 4.3 | 5.2 | 6.3 | 4.3 | 5.2 | 6.3 | – |
| Width: bucket | mm | 2750 | 2750 | 2750 | 2750 | 2750 | 2750 | – |
| | ft/in | 9'0" | 9'0" | 9'0" | 9'0" | 9'0" | 9'0" | – |
| Nominal material density, 100% fill factor | kg/m ³ | 1378 | 1114 | 934 | 1313 | 1062 | 890 | – |
| | lb/yd ³ | 2311 | 1,875 | 1,583 | 2202 | 1,787 | 1,508 | – |
| Clearance: full lift, 45° dump | mm | 2691 | 2571 | 2571 | 2654 | 2534 | 2534 | +581 |
| | ft/in | 8'9" | 8'5" | 8'5" | 8'8" | 8'3" | 8'3" | +1'10" |
| Reach: full lift, 45° dump | mm | 1174 | 1294 | 1294 | 1210 | 1331 | 1331 | +267 |
| | ft/in | 3'10" | 4'2" | 4'2" | 3'11" | 4'4" | 4'4" | +11" |
| Reach: 2130 mm (7'0") clearance, 45° dump | mm | 1608 | 1654 | 1654 | 1622 | 1666 | 1666 | +666 |
| | ft/in | 5'3" | 5'5" | 5'5" | 5'3" | 5'5" | 5'5" | +2'2" |
| Reach: level arm, level bucket | mm | 2642 | 2812 | 2812 | 2694 | 2864 | 2864 | +607 |
| | ft/in | 8'8" | 9'2" | 9'2" | 8'10" | 9'4" | 9'4" | +1'11" |
| Dig depth | mm | 100 | 100 | 100 | 101 | 101 | 101 | +35 |
| | in | 3.9" | 3.9" | 3.9" | 4" | 4" | 4" | +1.4" |
| Length: overall | mm | 7794 | 7964 | 7964 | 7846 | 8016 | 8016 | +740 |
| | ft/in | 25'6" | 26'1" | 26'1" | 25'8" | 26'3" | 26'3" | +2'5" |
| Height: overall | mm | 5346 | 5507 | 5786 | 5376 | 5539 | 5820 | +581 |
| | ft/in | 17'6" | 18'0" | 18'11" | 17'7" | 18'2" | 19'1" | +1'10" |
| Turning radius, bucket at carry | mm | 6174 | 6227 | 6227 | 6190 | 6244 | 6244 | +357 |
| | ft/in | 20'3" | 20'5" | 20'5" | 20'3" | 20'5" | 20'5" | +1'2" |
| Tipping load – straight, ISO 14397-1* | kg | 11 332 | 11 018 | 11 001 | 10 847 | 10 549 | 10 526 | –3003 |
| | lb | 24,975 | 24,282 | 24,247 | 23,907 | 23,249 | 23,198 | –6,618 |
| Tipping load – straight, rigid tire** | kg | 11 804 | 11 477 | 11 460 | 11 299 | 10 988 | 10 964 | –3128 |
| | lb | 26,016 | 25,294 | 25,257 | 24,903 | 24,217 | 24,164 | –6,893 |
| Tipping load – full turn, ISO 14397-1* | kg | 9646 | 9359 | 9340 | 9194 | 8921 | 8895 | –2625 |
| | lb | 21,259 | 20,626 | 20,584 | 20,262 | 19,662 | 19,605 | –5,785 |
| Tipping load – full turn, rigid tire** | kg | 10 262 | 9956 | 9936 | 9780 | 9491 | 9463 | –2793 |
| | lb | 22,616 | 21,943 | 21,898 | 21,556 | 20,917 | 20,856 | –6,154 |
| Breakout force | kg | 11 750 | 10 331 | 10 281 | 11 263 | 9936 | 9888 | –502 |
| | lb | 25,897 | 22,768 | 22,659 | 24,822 | 21,899 | 21,792 | –1,106 |
| Operating weight | kg | 15 730 | 15 869 | 15 937 | 16 131 | 16 270 | 16 335 | +249 |
| | lb | 34,668 | 34,975 | 35,124 | 35,551 | 35,859 | 36,002 | +549 |

*Full compliance to ISO 14397-1 (2007) Sections 1 through 6, which requires 2% verification between calculation and testing.

**Compliance to ISO 14397-1 (2007) Sections 1 through 5.

Dimensions listed are for a 938K configured with bucket, bolt-on cutting edge, heavy counterweights, additional guarding, 80 kg (176 lb) operator, and Michelin 20.5 R25 (L-3) XHA2 tires at a pressure of 4.48 bar (65 psi) in the front tires and 2.76 bar (40 psi) in the rear tires.

Bucket Specifications

938K Bucket Selection Table

| Bucket Fill Factor | | kg/m ³ | 1375 | 1450 | 1525 | 1600 | 1675 | 1750 | 1825 | 1900 | 1975 | 2050 | 2125 | High Lift | | |
|--------------------|--------|--------------------|-------|-------|-------|-------|-------|-------|-------|-------|-------|-------|-------|-------------------|--------------------|------|
| | | lb/yd ³ | 2,317 | 2,443 | 2,570 | 2,696 | 2,822 | 2,949 | 3,075 | 3,202 | 3,328 | 3,454 | 3,581 | | | |
| | | m ³ | | | | | | | | | | | | kg/m ³ | lb/yd ³ | |
| | | yd ³ | | | | | | | | | | | | | | |
| General Purpose | Pin On | 2.5 | 3.3 | | | | | | 114% | 109% | 105% | 101% | 97% | 94% | -529 | -891 |
| | | 2.7 | 3.5 | | | 115% | 109% | 105% | 100% | 97% | | | | | -486 | -819 |
| | | 2.9 | 3.8 | | | 111% | 106% | 101% | 97% | | | | | | -450 | -758 |
| | Fusion | 2.5 | 3.3 | | | | | 114% | 109% | 104% | 100% | 96% | | | -519 | -874 |
| | | 2.7 | 3.5 | | | 115% | 109% | 104% | 100% | 96% | | | | | -477 | -804 |
| | | 2.9 | 3.8 | | | 111% | 106% | 101% | 96% | | | | | | -441 | -744 |

| Bucket Fill Factor | | kg/m ³ | 800 | 850 | 900 | 950 | 1000 | 1050 | 1100 | 1150 | 1250 | 1350 | 1450 | High Lift | | |
|--------------------|--------|--------------------|-------|-------|-------|-------|-------|-------|-------|-------|-------|-------|-------|-------------------|--------------------|------|
| | | lb/yd ³ | 1,348 | 1,432 | 1,517 | 1,601 | 1,685 | 1,769 | 1,854 | 1,938 | 2,106 | 2,275 | 2,443 | | | |
| | | m ³ | | | | | | | | | | | | kg/m ³ | lb/yd ³ | |
| | | yd ³ | | | | | | | | | | | | | | |
| Light Material | Pin On | 3.5 | 4.6 | | | | | | | | 110% | 102% | 95% | -369 | -621 | |
| | | 4.2 | 5.5 | | | | 111% | 106% | 101% | 97% | | | | -300 | -506 | |
| | | 5.0 | 6.5 | | 110% | 104% | 98% | | | | | | | | -254 | -427 |
| | Fusion | 3.5 | 4.6 | | | | | | | 114% | 105% | 97% | | | -362 | -610 |
| | | 4.2 | 5.5 | | | 112% | 106% | 101% | 97% | | | | | | -295 | -497 |
| | | 5.0 | 6.5 | 111% | 105% | 99% | | | | | | | | | -249 | -420 |

Material density and fill factor are key variables when choosing the appropriate size of the bucket. The long floor and open throat design of the Performance Series Buckets along with the aggressive rack angles of the optimized K Series linkage will demonstrate fill factors greater than 100% ISO rated. Refer to the Fill Factors table for expected fill factor per material density and Bucket Selection Table for bucket sizing.

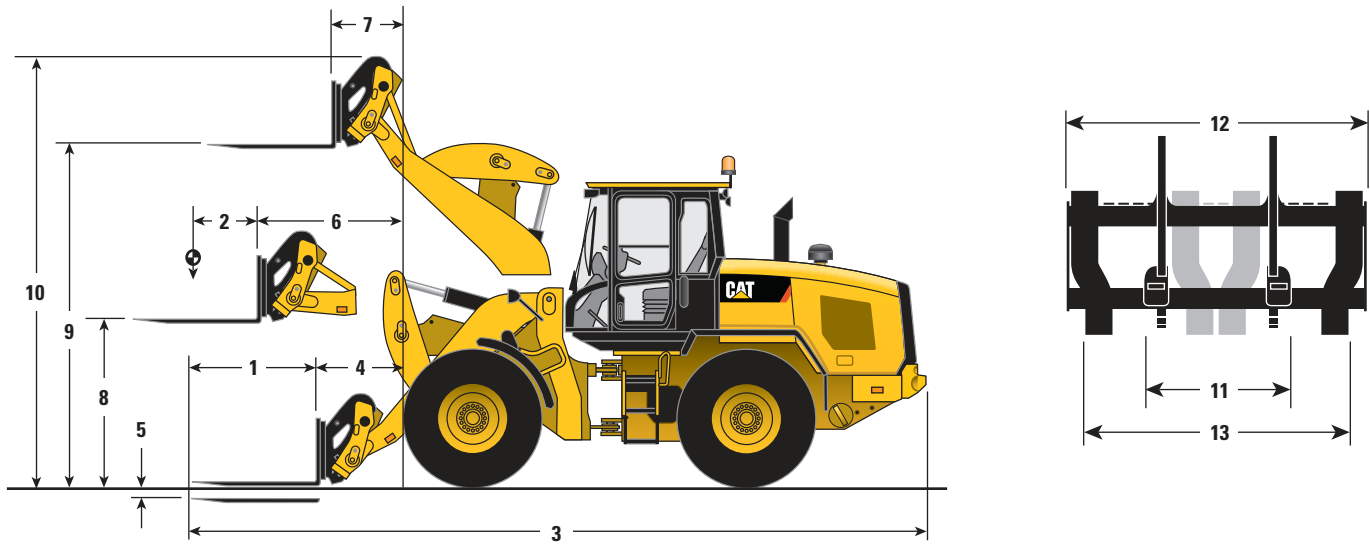
938K Fill Factors

| Materials | Density | Fill % |
|-----------------|--------------------------|--------|
| Earth and rock | ~ 1800 kg/m ³ | ~ 115% |
| Sand and gravel | ~ 1700 kg/m ³ | ~ 110% |
| Aggregates | ~ 1600 kg/m ³ | ~ 105% |
| Bulk grains | ~ 750 kg/m ³ | ~ 100% |
| Woodchips | ~ 500 kg/m ³ | ~ 100% |

938K Ground Engagement Options

| | Long Teeth and Segments | | Short Teeth and Segments | |
|--------------------------|-------------------------|---------|--------------------------|---------|
| Dig depth | +11 mm | +0.4 in | +5 mm | +0.2 in |
| Length: overall | +146 mm | +5.7 in | +121 mm | +4.8 in |
| Dump clearance | -105 mm | -4.1 in | -84 mm | -3.3 in |
| Reach | +102 mm | +4 in | +87 mm | +3.4 in |
| Tipping load – straight | -138 kg | -305 lb | -132 kg | -291 lb |
| Tipping load – full turn | -136 kg | -298 lb | -130 kg | -285 lb |
| Breakout force | -112 kg | -245 lb | -106 kg | -234 lb |
| Operating weight | +111 kg | +244 lb | +106 kg | +233 lb |

Operating Specifications with Pallet Forks



Pallet Fork – Fusion

| | 924K | | 930K | | 938K | |
|--|-----------|-----------|-----------|-----------|-----------|-----------|
| 1 Fork tine length | 1220 mm | 4'0" | 1220 mm | 4'0" | 1220 mm | 4'0" |
| 2 Load center | 610 mm | 2'0" | 610 mm | 2'0" | 610 mm | 2'0" |
| 3 Length: overall | 7875 mm | 25'10" | 7882 mm | 25'10" | 7942 mm | 26'0" |
| 4 Reach: ground | 926 mm | 3'0" | 926 mm | 3'0" | 961 mm | 3'1" |
| 5 Dig depth | 47 mm | 1.9" | 47 mm | 1.9" | 44 mm | 1.7" |
| 6 Reach: level arm | 1569 mm | 5'1" | 1569 mm | 5'1" | 1617 mm | 5'3" |
| 7 Reach: full lift | 767 mm | 2'6" | 767 mm | 2'6" | 814 mm | 2'8" |
| 8 Clearance: level arm | 1792 mm | 5'10" | 1792 mm | 5'10" | 1830 mm | 6'0" |
| 9 Clearance: full lift | 3693 mm | 12'1" | 3693 mm | 12'1" | 3758 mm | 12'3" |
| 10 Height: overall | 4676 mm | 15'4" | 4676 mm | 15'4" | 4740 mm | 15'6" |
| Tipping load – straight, ISO 14397-1* | 6650 kg | 14,657 lb | 7586 kg | 16,720 lb | 8811 kg | 19,420 lb |
| Tipping load – full turn, ISO 14397-1* | 5729 kg | 12,626 lb | 6502 kg | 14,330 lb | 7530 kg | 16,595 lb |
| Operating weight | 12 577 kg | 27,719 lb | 13 494 kg | 29,741 lb | 15 432 kg | 34,012 lb |
| Rated load % of full turn tip: | | | | | | |
| 50% of tip: SAE J1197** | 2864 kg | 6,313 lb | 3251 kg | 7,165 lb | 3765 kg | 8,297 lb |
| 60% of tip: rough terrain EN474-3** | 3437 kg | 7,575 lb | 3901 kg | 8,598 lb | 4518 kg | 9,957 lb |
| 80% of tip: firm and level EN474-3** | 4583 kg | 10,100 lb | 5202 kg | 11,464 lb | 6024 kg | 13,276 lb |
| 11 Minimum fork spacing | 300 mm | 11" | 300 mm | 11" | 300 mm | 11" |
| 12 Carriage width | 1566 mm | 5'1" | 1566 mm | 5'1" | 1566 mm | 5'1" |
| 13 Maximum fork spacing | 1550 mm | 5'1" | 1550 mm | 5'1" | 1550 mm | 5'1" |

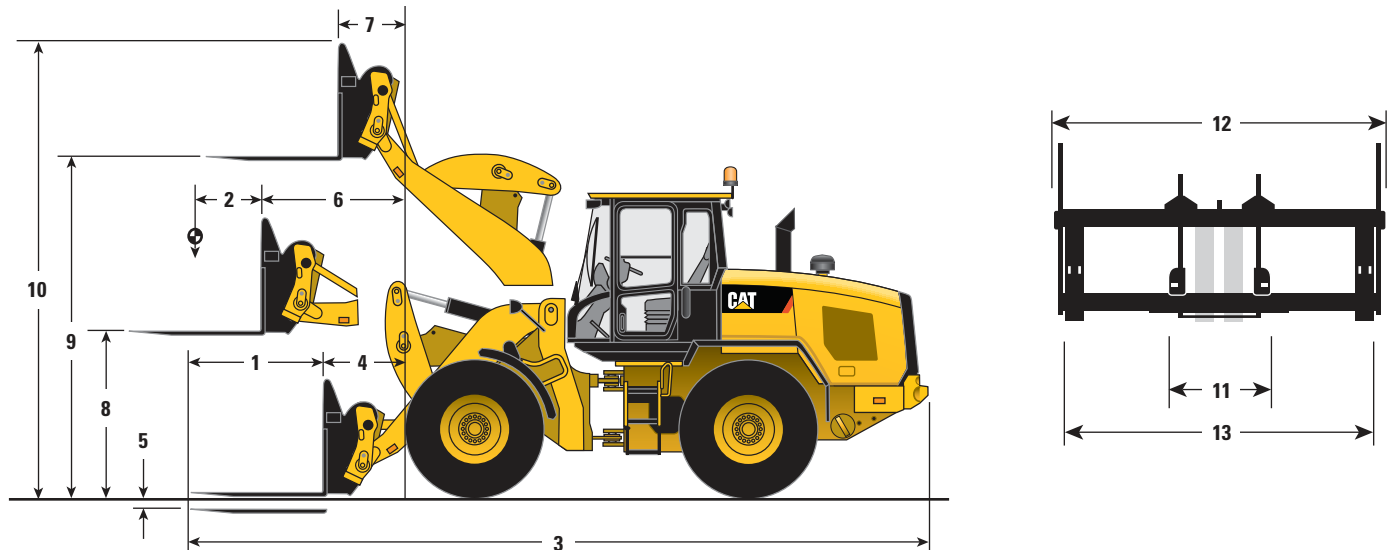
*Full compliance to ISO 14397-1 (2007) Sections 1 through 6, which requires 2% verification between calculation and testing.

**Full compliance to EN474-3 and SAE J1197.

Dimensions listed are for a machine configured with Fusion work tool, counterweights, additional guarding, 80 kg (176 lb) operator, and Michelin 20.5 R25 (L-3) XHA2 tires.

Operating Specifications

Operating Specifications with Construction Forks



Construction Fork – Fusion

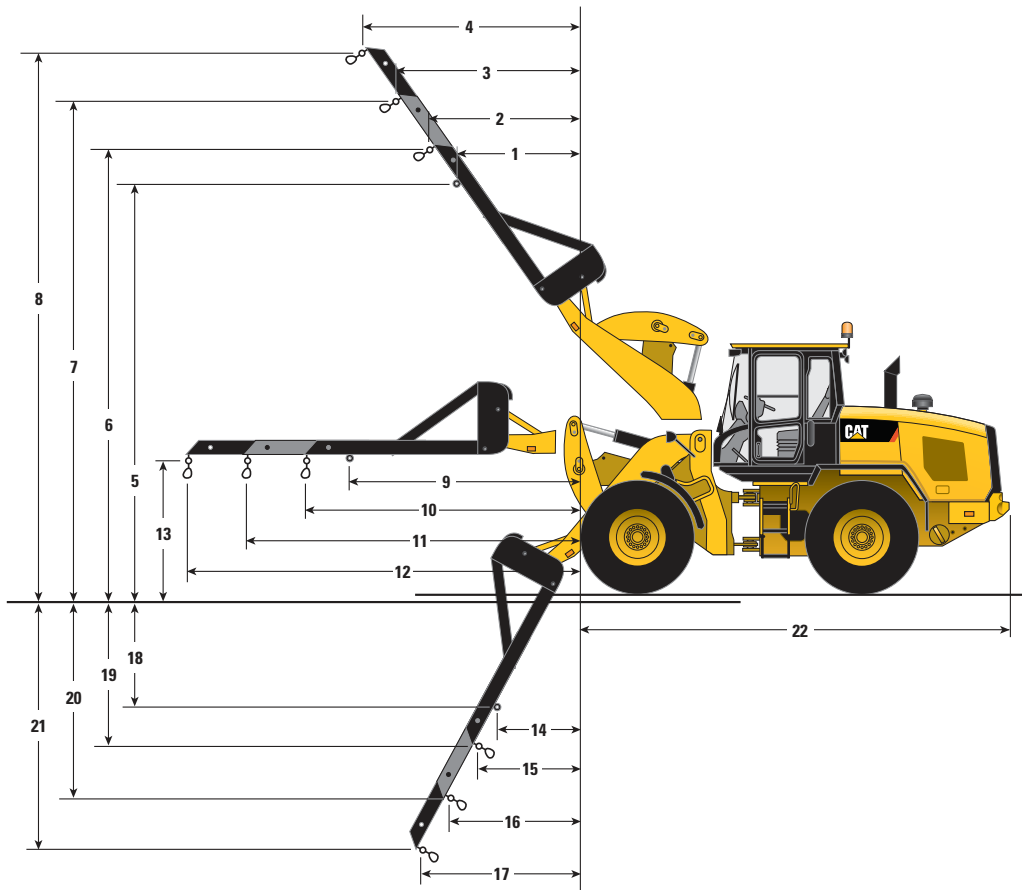
| | 924K | | 930K | | 938K | |
|--|-----------|-----------|-----------|-----------|-----------|-----------|
| 1 Fork tine length | 1524 mm | 5'0" | 1524 mm | 5'0" | 1524 mm | 5'0" |
| 2 Load center | 762 mm | 2'6" | 762 mm | 2'6" | 762 mm | 2'6" |
| 3 Length: overall | 8298 mm | 27'2" | 8305 mm | 27'2" | 8366 mm | 27'5" |
| 4 Reach: ground | 1045 mm | 3'5" | 1045 mm | 3'5" | 1081 mm | 3'6" |
| 5 Dig depth | -120 mm | -4.7" | -120 mm | -4.7" | -119 mm | -4.7" |
| 6 Reach: level arm | 1627 mm | 5'4" | 1627 mm | 5'4" | 1675 mm | 5'5" |
| 7 Reach: full lift | 825 mm | 2'8" | 825 mm | 2'8" | 872 mm | 2'10" |
| 8 Clearance: level arm | 1729 mm | 5'8" | 1729 mm | 5'8" | 1766 mm | 5'9" |
| 9 Clearance: full lift | 3630 mm | 11'10" | 3630 mm | 11'10" | 3693 mm | 12'1" |
| 10 Height: overall | 4935 mm | 16'2" | 4935 mm | 16'2" | 0 mm | 0" |
| Tipping load – straight, ISO 14397-1* | 5951 kg | 13,115 lb | 6824 kg | 15,039 lb | 7973 kg | 17,571 lb |
| Tipping load – full turn, ISO 14397-1* | 5096 kg | 11,231 lb | 5817 kg | 12,821 lb | 6781 kg | 14,945 lb |
| Operating weight | 12 911 kg | 28,456 lb | 13 829 kg | 30,478 lb | 15 767 kg | 34,749 lb |
| Rated load % of full turn tip: | | | | | | |
| 50% of tip: SAE J1197** | 2548 kg | 5,615 lb | 2909 kg | 6,410 lb | 3391 kg | 7,472 lb |
| 60% of tip: rough terrain EN474-3** | 3058 kg | 6,738 lb | 3490 kg | 7,692 lb | 4069 kg | 8,967 lb |
| 80% of tip: firm and level EN474-3** | 4077 kg | 8,985 lb | 4654 kg | 10,256 lb | 5425 kg | 11,956 lb |
| 11 Minimum fork spacing | 300 mm | 11" | 300 mm | 11" | 300 mm | 11" |
| 12 Carriage width | 2498 mm | 8'2" | 2498 mm | 8'2" | 2498 mm | 8'2" |
| 13 Maximum fork spacing | 2375 mm | 7'9" | 2375 mm | 7'9" | 2375 mm | 7'9" |

*Full compliance to ISO 14397-1 (2007) Sections 1 through 6, which requires 2% verification between calculation and testing.

**Full compliance to EN474-3 and SAE J1197.

Dimensions listed are for a machine configured with Fusion work tool, counterweights, additional guarding, 80 kg (176 lb) operator, and Michelin 20.5 R25 (L-3) XHA2 tires.

Operating Specifications with Material Handling Arm



Material Handling Arm – Fusion

| | 924K | | 930K | | 938K | | 924K | | 930K | | 938K | | |
|---|-----------|--------|-----------|--------|-----------|-------|-----------|---------|-----------|---------|-----------|---------|--------|
| 1 | 2113 mm | 6'11" | 2113 mm | 6'11" | 2144 mm | 7'0" | 12 | 5327 mm | 17'5" | 5327 mm | 17'5" | 5376 mm | 17'7" |
| 2 | 2333 mm | 7'7" | 2333 mm | 7'7" | 2362 mm | 7'8" | 13 | 1854 mm | 6'0" | 1854 mm | 6'0" | 1890 mm | 6'2" |
| 3 | 2919 mm | 9'6" | 2919 mm | 9'6" | 2943 mm | 9'7" | 14 | 863 mm | 2'9" | 863 mm | 2'9" | 906 mm | 2'11" |
| 4 | 3505 mm | 11'6" | 3505 mm | 11'6" | 3525 mm | 11'6" | 15 | 1045 mm | 3'5" | 1045 mm | 3'5" | 1089 mm | 3'6" |
| 5 | 5257 mm | 17'2" | 5257 mm | 17'2" | 5343 mm | 17'6" | 16 | 1276 mm | 4'2" | 1276 mm | 4'2" | 1324 mm | 4'4" |
| 6 | 5568 mm | 18'3" | 5568 mm | 18'3" | 5655 mm | 18'6" | 17 | 1507 mm | 4'11" | 1507 mm | 4'11" | 1559 mm | 5'1" |
| 7 | 6112 mm | 20'0" | 6112 mm | 20'0" | 6204 mm | 20'4" | 18 | 1975 mm | 6'5" | 1975 mm | 6'5" | 1983 mm | 6'6" |
| 8 | 6657 mm | 21'10" | 6657 mm | 21'10" | 6754 mm | 22'1" | 19 | 2310 mm | 7'6" | 2310 mm | 7'6" | 2316 mm | 7'7" |
| 9 | 3354 mm | 11'0" | 3354 mm | 11'0" | 3403 mm | 11'1" | 20 | 3076 mm | 10'1" | 3076 mm | 10'1" | 3081 mm | 10'1" |
| 10 | 3727 mm | 12'2" | 3727 mm | 12'2" | 3775 mm | 12'4" | 21 | 3842 mm | 12'7" | 3842 mm | 12'7" | 3846 mm | 12'7" |
| 11 | 4527 mm | 14'10" | 4527 mm | 14'10" | 4575 mm | 15'0" | 22 | 5730 mm | 18'9" | 5737 mm | 18'9" | 5762 mm | 18'10" |
| Operating weight | 12 444 kg | | 27,426 lb | | 13 361 kg | | 29,447 lb | | 15 244 kg | | 33,597 lb | | |
| Rated load (50% of full turn tip, SAE J1197*) | | | | | | | | | | | | | |
| Fixed tab (9) | 2053 kg | | 4,525 lb | | 2329 kg | | 5,133 lb | | 2705 kg | | 5,962 lb | | |
| Minimum extension (10) | 1882 kg | | 4,148 lb | | 2135 kg | | 4,705 lb | | 2482 kg | | 5,470 lb | | |
| Middle extension (11) | 1597 kg | | 3,518 lb | | 1811 kg | | 3,991 lb | | 2109 kg | | 4,647 lb | | |
| Maximum extension (12) | 1386 kg | | 3,055 lb | | 1572 kg | | 3,465 lb | | 1833 kg | | 4,040 lb | | |

*Full compliance to EN474-3 and SAE J1197.

Operating Specifications

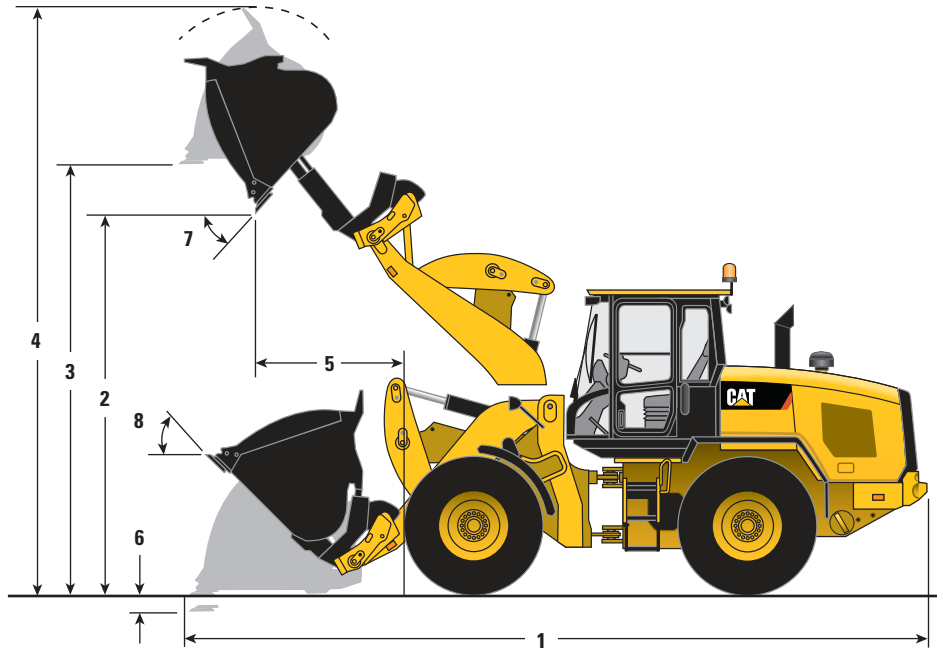
Operating Specifications with High Dump Buckets

| | | Pin On | | | Fusion | | | ISO 23727 | | | High Lift | | |
|---|--------------------|--------|--------|--------|--------|--------|--------|-----------|--------|--------|-----------|--------|--------|
| | | 924K | 930K | 938K | 924K | 930K | 938K | 924K | 930K | 938K | 924K | 930K | 938K |
| Rated capacity | m ³ | 3.0 | 3.5 | 4.1 | 3.0 | 3.5 | 4.1 | 3.0 | 3.5 | 4.1 | – | – | – |
| | yd ³ | 3.9 | 4.6 | 5.4 | 3.9 | 4.6 | 5.4 | 3.9 | 4.6 | 5.4 | – | – | – |
| Struck capacity | m ³ | 2.9 | 3.3 | 3.9 | 2.9 | 3.3 | 3.9 | 2.9 | 3.3 | 3.9 | – | – | – |
| | yd ³ | 3.8 | 4.3 | 5.1 | 3.8 | 4.3 | 5.1 | 3.8 | 4.3 | 5.1 | – | – | – |
| Bucket width | mm | 2550 | 2550 | 2750 | 2550 | 2550 | 2750 | 2550 | 2550 | 2750 | – | – | – |
| | ft/in | 8'4" | 8'4" | 9'0" | 8'4" | 8'4" | 9'0" | 8'4" | 8'4" | 9'0" | – | – | – |
| Nominal material density, 100% fill factor | kg/m ³ | 1050 | 1015 | 1006 | 1020 | 992 | 976 | 980 | 953 | 947 | – | – | – |
| | lb/yd ³ | 1,780 | 1,702 | 1,684 | 1,730 | 1,663 | 1,634 | 1,662 | 1,598 | 1,585 | – | – | – |
| 1 Length: overall | mm | 7948 | 8005 | 8107 | 7979 | 8036 | 8149 | 8145 | 8202 | 8305 | +642 | +793 | +740 |
| | ft/in | 26'0" | 26'3" | 26'7" | 26'2" | 26'4" | 26'8" | 26'8" | 26'10" | 27'2" | +2'1" | +2'7" | +2'5" |
| 2 Dump clearance: full lift, rolled out | mm | 4255 | 4216 | 4248 | 4328 | 4291 | 4333 | 4496 | 4459 | 4494 | +439 | +567 | +545 |
| | ft/in | 13'11" | 13'9" | 13'11" | 14'2" | 14'0" | 14'2" | 14'9" | 14'7" | 14'8" | +1'5" | +1'10" | +1'9" |
| 3 Clearance: level bucket | mm | 4598 | 4598 | 4668 | 4662 | 4662 | 4740 | 4825 | 4825 | 4895 | +448 | +572 | +553 |
| | ft/in | 15'1" | 15'1" | 15'3" | 15'3" | 15'3" | 15'6" | 15'9" | 15'9" | 16'0" | +1'5" | +1'10" | +1'9" |
| 4 Height: overall | mm | 6184 | 6226 | 6295 | 6248 | 6290 | 6367 | 6411 | 6453 | 6523 | +448 | +572 | +553 |
| | ft/in | 20'3" | 20'5" | 20'7" | 20'5" | 20'7" | 20'10" | 21'0" | 21'2" | 21'4" | +1'5" | +1'10" | +1'9" |
| 5 Reach: full lift, rolled out | mm | 1451 | 1482 | 1548 | 1453 | 1486 | 1559 | 1538 | 1571 | 1637 | +252 | +327 | +275 |
| | ft/in | 4'9" | 4'10" | 5'0" | 4'9" | 4'10" | 5'1" | 5'0" | 5'1" | 5'4" | +9" | +1'0" | +10" |
| 6 Dig depth | mm | 100 | 100 | 101 | 100 | 100 | 101 | 92 | 92 | 92 | +35 | +35 | +35 |
| | in | 3.9" | 3.9" | 4" | 3.9" | 3.9" | 4" | 3.6" | 3.6" | 3.6" | +1.4" | +1.4" | +1.4" |
| Turning radius, bucket at carry | mm | 6096 | 6113 | 6293 | 6087 | 6104 | 6286 | 6118 | 6136 | 6315 | +333 | +405 | +378 |
| | ft/in | 19'11" | 20'0" | 20'7" | 19'11" | 20'0" | 20'7" | 20'0" | 20'1" | 20'8" | +1'1" | +1'3" | +1'2" |
| 7 Maximum dump angle | deg | 52 | 52 | 51 | 49 | 49 | 49 | 48 | 48 | 50 | – | – | – |
| 8 Rack angle at carry | deg | 43 | 43 | 43 | 45 | 45 | 45 | 43 | 43 | 43 | – | – | – |
| Tipping load – straight, ISO 14397-1* | kg | 7408 | 8405 | 9792 | 7235 | 8246 | 9545 | 6957 | 7932 | 9257 | –1830 | –2376 | –2571 |
| | lb | 16,326 | 18,525 | 21,582 | 15,945 | 18,175 | 21,036 | 15,332 | 17,481 | 20,401 | –4,032 | –5,235 | –5,666 |
| Tipping load – straight, rigid tire** | kg | 7716 | 8755 | 10 200 | 7536 | 8590 | 9942 | 7247 | 8262 | 9642 | –1906 | –2474 | –2678 |
| | lb | 17,006 | 19,296 | 22,481 | 16,609 | 18,932 | 21,912 | 15,971 | 18,210 | 21,251 | –4,200 | –5,453 | –5,902 |
| Tipping load – full turn, ISO 14397-1* | kg | 6299 | 7107 | 8253 | 6122 | 6941 | 8007 | 5883 | 6672 | 7766 | –1617 | –2088 | –2250 |
| | lb | 13,882 | 15,662 | 18,189 | 13,492 | 15,299 | 17,647 | 12,965 | 14,705 | 17,115 | –3,562 | –4,601 | –4,959 |
| Tipping load – full turn, rigid tire** | kg | 6701 | 7560 | 8780 | 6513 | 7385 | 8518 | 6258 | 7098 | 8262 | –1720 | –2221 | –2394 |
| | lb | 14,768 | 16,662 | 19,350 | 14,353 | 16,275 | 18,774 | 13,793 | 15,644 | 18,208 | –3,790 | –4,895 | –5,275 |
| Breakout force | kg | 6509 | 8225 | 9066 | 6420 | 8126 | 8895 | 5657 | 7220 | 7988 | –374 | –225 | –393 |
| | lb | 14,346 | 18,128 | 19,980 | 14,149 | 17,909 | 19,604 | 12,467 | 15,913 | 17,605 | –824 | –496 | –865 |
| Operating weight | kg | 13 258 | 14 281 | 16 252 | 13 602 | 14 625 | 16 648 | 13 540 | 14 564 | 16 537 | +299 | +247 | +249 |
| | lb | 29,220 | 31,474 | 35,820 | 29,978 | 32,232 | 36,691 | 29,842 | 32,098 | 36,448 | +659 | +544 | +549 |

*Full compliance to ISO 14397-1 (2007) Sections 1 through 6, which requires 2% verification between calculation and testing.

**Compliance to ISO 14397-1 (2007) Sections 1 through 5.

Dimensions listed are for a machine configured with rollout bucket, counterweights, additional guarding, 80 kg (176 lb) operator, and Michelin 20.5 R25 (L-3) XHA2 tires.

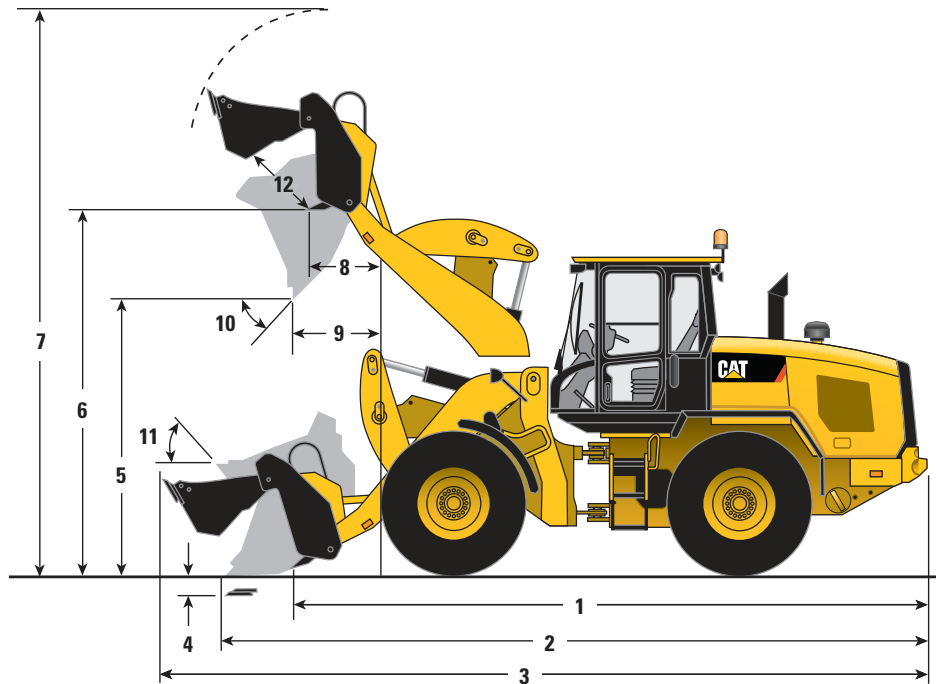


Bucket Selection Table for High Dump Buckets

| Bucket Fill Factor | | kg/m ³ | | 650 | 725 | 800 | 875 | 950 | 1025 | 1100 | 1175 | 1250 | 1325 | 1400 | High Lift | |
|--------------------|------|--------------------|-----------------|-------|-------|-------|-------|-------|-------|-------|-------|-------|-------|-------|-------------------|--------------------|
| | | lb/yd ³ | | 1,095 | 1,222 | 1,348 | 1,474 | 1,601 | 1,727 | 1,854 | 1,980 | 2,106 | 2,233 | 2,359 | | |
| | | m ³ | yd ³ | | | | | | | | | | | | kg/m ³ | lb/yd ³ |
| Pin On | 924K | 3.0 | 3.9 | | | | | 109% | 101% | | | | | | -265 | -447 |
| | | 3.5 | 4.6 | | | 109% | 100% | | | | | | | | -226 | -380 |
| | | 4.1 | 5.4 | 112% | 100% | | | | | | | | | | -191 | -322 |
| | 930K | 3.0 | 3.9 | | | | | | | 108% | 101% | 95% | | | -345 | -582 |
| | | 3.5 | 4.6 | | | | 115% | 106% | 98% | | | | | | -293 | -494 |
| | | 4.1 | 5.4 | | | 105% | 96% | | | | | | | | -248 | -418 |
| 938K | 4.1 | 5.4 | | | | 114% | 105% | 97% | | | | | | -269 | -452 | |
| Fusion | 924K | 3.0 | 3.9 | | | | 115% | 106% | 98% | | | | | | -271 | -457 |
| | | 3.5 | 4.6 | | | 106% | 97% | | | | | | | | -231 | -390 |
| | | 4.1 | 5.4 | 109% | 98% | | | | | | | | | | -196 | -330 |
| | 930K | 3.0 | 3.9 | | | | | | 113% | 106% | 99% | | | | -353 | -594 |
| | | 3.5 | 4.6 | | | | 112% | 103% | 96% | | | | | | -300 | -506 |
| | | 4.1 | 5.4 | | 113% | 103% | 94% | | | | | | | | -254 | -428 |
| | 938K | 3.0 | 3.9 | | | | | | | | | 110% | 103% | 98% | -380 | -640 |
| | | 3.5 | 4.6 | | | | | | 113% | 106% | 99% | | | | -324 | -545 |
| | | 4.1 | 5.4 | | | 111% | 103% | 95% | | | | | | | -274 | -462 |

Operating Specifications

Operating Specifications with Multi-Purpose Bucket



| | Multi Purpose – Fusion | | | | | |
|---|------------------------|---------------------|--------------------|---------------------|--------------------|---------------------|
| | 924K | | 930K | | 938K | |
| Rated capacity | 2.1 m ³ | 2.7 yd ³ | 2.1 m ³ | 2.7 yd ³ | 2.1 m ³ | 2.7 yd ³ |
| Struck capacity | 2.0 m ³ | 2.6 yd ³ | 2.0 m ³ | 2.6 yd ³ | 2.0 m ³ | 2.6 yd ³ |
| 1 Length – dozer edge to bumper | 6744 mm | 22'1" | 6751 mm | 22'1" | 6815 mm | 22'4" |
| 2 Length: overall – closed clam | 7455 mm | 24'5" | 7462 mm | 24'5" | 7525 mm | 24'8" |
| 3 Length: overall – open clam | 8104 mm | 26'7" | 8111 mm | 26'7" | 8175 mm | 26'9" |
| 4 Dig depth | 100 mm | 3" | 100 mm | 3" | 101 mm | 3" |
| 5 Clearance: full lift, 45° dump | 2962 mm | 9'8" | 2962 mm | 9'8" | 3017 mm | 9'10" |
| 6 Clearance: full lift – open clam | 3577 mm | 11'8" | 3577 mm | 11'8" | 3638 mm | 11'11" |
| 7 Height: overall | 5791 mm | 18'11" | 5791 mm | 18'11" | 5864 mm | 19'2" |
| 8 Reach: full lift – open clam | 809 mm | 2'7" | 809 mm | 2'7" | 857 mm | 2'9" |
| 9 Reach: full lift, 45° dump | 1130 mm | 3'8" | 1130 mm | 3'8" | 1176 mm | 3'10" |
| 10 Maximum dump angle | 56° | | 56° | | 56° | |
| 11 Rack angle at carry | 45° | | 45° | | 45° | |
| 12 Clam open distance | 995 mm | 3'3" | 995 mm | 3'3" | 995 mm | 3'3" |
| 13 Bucket width | 2550 mm | 8'4" | 2550 mm | 8'4" | 2550 mm | 8'4" |
| Turning radius – bucket at carry | 5925 mm | 19'5" | 5925 mm | 19'5" | 6004 mm | 19'8" |
| Tipping load – straight, ISO 14397-1* | 8071 kg | 17,787 lb | 9317 kg | 20,534 lb | 10 920 kg | 24,068 lb |
| Tipping load – full turn, ISO 14397-1* | 6860 kg | 15,119 lb | 7890 kg | 17,388 lb | 9234 kg | 20,351 lb |
| Breakout force | 9870 kg | 21,752 lb | 12 864 kg | 28,352 lb | 14 567 kg | 32,105 lb |
| Operating weight | 13 409 kg | 29,554 lb | 14 326 kg | 31,575 lb | 16 209 kg | 35,724 lb |

*Full compliance to ISO 14397-1 (2007) Sections 1 through 6, which requires 2% verification between calculation and testing.

Dimensions listed are for a machine configured with Fusion work tool, counterweights, additional guarding, 80 kg (176 lb) operator, and Michelin 20.5 R25 (L-3) XHA2 tires.

Optional Equipment

| | 924K | | | | 930K | | | | 938K | | | |
|-------------------------------------|------------------|------|---|--------|------------------|------|--|--------|------------------|------|--|--------|
| | Operating weight | | Tipping load – full turn with 1.9 m ³ (2.5 yd ³) Fusion bucket | | Operating weight | | Tipping load – full turn with 2.1 m ³ (2.75 yd ³) Fusion bucket | | Operating weight | | Tipping load – full turn with 2.5 m ³ (3.25 yd ³) Fusion bucket | |
| | kg | lb | kg | lb | kg | lb | kg | lb | kg | lb | kg | lb |
| Change with options removed: | | | | | | | | | | | | |
| Optional counterweight | 0 | 0 | 0 | 0 | -320 | -705 | -502 | -1,106 | -320 | -705 | -593 | -1,306 |
| Guard, crankcase | -11 | -23 | -16 | -34 | -11 | -23 | -13 | -29 | -11 | -24 | -17 | -36 |
| Guard, power train lower | -77 | -170 | -77 | -168 | -77 | -170 | -69 | -151 | -68 | -150 | -67 | -146 |
| Guard, driveshaft | -44 | -96 | -12 | -26 | -44 | -96 | -12 | -26 | -45 | -100 | -12 | -27 |
| Roading fenders | -18 | -38 | -28 | -61 | -18 | -38 | -24 | -52 | -18 | -38 | -28 | -60 |
| Secondary steer | -69 | -151 | -75 | -164 | -69 | -151 | -73 | -161 | -69 | -151 | -74 | -162 |
| Ride control | -49 | -107 | -27 | -59 | -49 | -107 | -26 | -57 | -49 | -107 | -27 | -59 |
| Change with options added: | | | | | | | | | | | | |
| Guard, front window | +34 | +74 | +17 | +37 | +34 | +74 | +18 | +39 | +34 | +74 | +18 | +39 |
| Guard, rear waste gate | +276 | +608 | +596 | +1,313 | +276 | +608 | +488 | +1,075 | +276 | +608 | +581 | +1,280 |
| Guard, power train side | +11 | +24 | +10 | +22 | +11 | +24 | +9 | +19 | +11 | +24 | +10 | +22 |
| Cold start package | +54 | +119 | +104 | +229 | +54 | +119 | +74 | +163 | +54 | +119 | +101 | +222 |
| Optional tool box | +44 | +96 | +37 | +81 | +44 | +96 | +25 | +55 | +44 | +96 | +36 | +79 |
| Logger counterweight | +400 | +881 | +661 | +1,456 | +400 | +881 | +557 | +1,227 | +400 | +881 | +645 | +1,421 |

924K, 930K, 938K Standard Equipment

Standard equipment may vary. Consult your Cat dealer for details.

POWER TRAIN

- Axle seal guards
- Auto idle shut down feature
- Brake/decelerator pedal
- Cat C6.6 ACERT™ engine
 - Tier 4 Interim/Stage IIIB compliant
 - Turbocharged and aftercooled
 - Filtered crankcase breather
 - Diesel particulate filter
- Coolant protection to –34° C (–29° F)
- Differential lock in front axle
- Differential rear open
- Dry type air cleaner
- Enclosed wet disc full hydraulic brakes
- Fuel priming pump, automatic
- Fuel water separator
- Hydraulically driven demand cooling fan
- Hydrostatic transmission with electronic speed range control
 - 4 speed ranges
 - Rimpull control
 - Creeper control
- Lubed for life driveshafts
- Parking brake, electric
- Single plane cooling system with remote coolant reservoir
- S·O·SSM port, engine, coolant and transmission oil
- Thermal starting aid (glow plugs)
- Throttle lock
- Transmission directional control on implement joystick
- Transmission sight gauge
- Transmission oil cooler (938K only)

HYDRAULICS

- Heavy duty hydraulic cooler
- Hydraulic diagnostic connectors and S·O·SSM ports
- Hydraulic sight gauge, visible
- Load sensing hydraulics and steering
- Seat-mounted hydraulic controls with F/N/R

ELECTRICAL

- Alternator, 115-amp, heavy duty
- 12V power supply in cab (2)
- Batteries, 1,000 CCA (2)
- 24 volt system
- Back-up alarm
- Battery disconnect switch
- Beacon ready
- Diagnostic connector
- Directional signals front and rear
- Emergency shutdown switch
- Halogen work lights front and rear
- Heavy duty gear reduction starter
- LED rear stop tail turn lights
- Remote jump start post
- Resettable main and critical function breakers
- Roading lights front and rear

OPERATOR ENVIRONMENT

- 75 mm (3 in) retractable seatbelt
- Automatic temperature control
- Cab, enclosed ROPS/FOPS pressurized and sound suppressed
- Cup holder
- External heated mirrors
- Ground level cab door release
- Gauges
 - Digital direction indicator
 - Digital hour meter and odometer
 - Digital speedometer
 - Engine coolant temperature gauge
 - Fuel level indicator
 - Hydraulic oil temperature gauge
 - Tachometer
- Hydraulic control lockout
- Interior cab lighting, door and dome
- Interior rearview mirrors (2)
- Lunch box storage
- Operator warning system indicators
- Radio ready speakers
- Rear window defrost, electric
- Removable floor mat
- Seat-mounted electronic implement controls, adjustable
- Sliding glass on the side windows
- Steering column mounted multi function control – lights, wipers, turn signal
- Suspension seat, fabric
- Tilt and telescopic steering wheel
- Tinted front glass
- Wet arm wiper/washer, 2-speed and intermittent, front
- Wet arm wiper/washer, rear

OTHER STANDARD EQUIPMENT

- Automatic bucket/fork positioner, adjustable in-cab
- Automatic lift and bucket kickouts, adjustable in-cab
- Fenders
- Large-access enclosure doors with adjustable close/open force
- Parallel lift loader linkage with sealed pins
- Recovery hitch with pin
- Remote mounted lubrication points
- Toolbox, lockable
- Vandalism protection – lockable compartments

EU STANDARD EQUIPMENT

- Deluxe cab
- Secondary display
- Rearview camera

NOTE: Not all features are available in all regions. See your Cat dealer for more information.

Optional equipment may vary. Consult your Cat dealer for details.

- Antifreeze/coolant, extended-life, protects to -50°C (-58°F)
- Axles, differential, limited slip, rear
- Beacon light, rotating or strobe
- Cab, deluxe includes
(standard in Europe, optional in North America):
 - Automatic blower control
 - Electrically adjustable external heated mirrors (2)
 - LED interior lighting
 - Secondary display
 - Sunscreen
 - Visor
- Camera, rearview (standard in Europe)
- Cold start package:
 - Ether starting aid
 - Block heater
 - Additional batteries (2)
- Counterweight, heavy
- Counterweight, logger
- Coupler, Fusion
- Coupler, ISO 23727
- Coupler, jumper lines, third function
- Debris package
- Debris package – cleaning arrangement
- Fenders, roading
- Fenders, full coverage
- Guards
 - Power train, lower
 - Power train, side
 - Crankcase
 - Driveshaft
 - Windshield
- Hydraulic control auxiliary, third and fourth function
- Jumper lines, third function
- Linkage, high lift
- Lights, auxiliary, halogen or HID
- Machine Security System
- Product Link
- Radio packages:
 - Radio ready with Bluetooth interface, microphone and auxiliary inputs for MP3 players
 - Radio, AM/FM with CD player
 - Radio, AM/FM with CD player deluxe, Bluetooth interface, microphone and auxiliary inputs for MP3 players
- Ride Control System
- Seats:
 - Deluxe seat – fully adjustable fabric air suspension seat with high seat backrest
 - Premium seat – fully adjustable heated fabric air suspension seat with high seat backrest and lumbar support. Seat is heated and ventilated on bottom cushion and backrest.
- Steering:
 - Dual mode
 - Secondary
- Tires:
 - Bias ply, 20.5-25
 - Radial, 17.5 R25, 20.5 R25, 550/65 R25, 650/65 R25
 - Flexport
 - Skidder/Agriculture
- Toolbox, additional
- Work tools

NOTE: Not all features are available in all regions. See your Cat dealer for more information.

924K, 930K, 938K Wheel Loaders

For more complete information on Cat products, dealer services, and industry solutions, visit us on the web at www.cat.com

© 2012 Caterpillar Inc.
All rights reserved

Materials and specifications are subject to change without notice. Featured machines in photos may include additional equipment. See your Cat dealer for available options.

CAT, CATERPILLAR, SAFETY.CAT.COM, their respective logos, "Caterpillar Yellow" and the "Power Edge" trade dress, as well as corporate and product identity used herein, are trademarks of Caterpillar and may not be used without permission.

AEHQ6699-01 (10-2012)
Replaces AEHQ6699

