



# 994K

## Wheel Loader

# Technical Specifications

Configurations and features may vary by region. Please consult your Cat® dealer for availability in your area.

## Table of Contents

<b>Specifications</b> .....	<b>2</b>
Engine .....	2
Operating Specifications .....	2
Transmission .....	2
Hydraulic System – Lift/Tilt .....	2
Hydraulic Cycle Time .....	3
Complete System Fill .....	3
Axles .....	3
Brakes .....	3
Cooling System .....	3
Sound Performance .....	3
Hydraulic System – Steering .....	3
Dimensions .....	4
Bucket Selection Guide .....	5
Moderate to High Digging Resistance .....	5
Low to Moderate Digging Resistance .....	6
Operating Specifications – Standard Lift .....	7
Operating Specifications – High Lift .....	9
<b>Standard and Optional Equipment</b> .....	<b>11</b>

# 994K Wheel Loader Specifications

## Engine

Engine Model	Cat® 3516E	
Emissions	U.S. EPA Tier 4 Final/ EU Stage V or U.S. EPA Tier 1 equivalent	
Rated Speed	1,600 rpm	
Engine Power – ISO 14396:2002	1377 kW	1,847 hp
Gross Power – SAE J1995:2014	1394 kW	1,870 hp
Net Power – SAE J1349:2011		
Standard Ambient	1297 kW	1,739 hp
High Ambient	1265 kW	1,696 hp
Bore	170 mm	6.7 in
Stroke	215 mm	8.5 in
Displacement	78.1 L	4,766 in <sup>3</sup>
Peak Torque @ 1,200 rpm – SAE J1995	11 591 N·m	8,549 lbf·ft
Torque Rise	39%	

- The power ratings apply when tested under the reference conditions for the specified standard.
- The net power advertised is the power available at the flywheel when the engine is equipped with fan, alternator, air cleaner and muffler.
- The gross power advertised is with the fan at maximum speed.

## Operating Specifications

Operating Weight – Standard	240 018 kg	529,149 lb
Operating Weight – High Lift	240 598 kg	530,428 lb
Rated Payload – Standard		
Moderate to High Digging Resistance	40.8 tonnes	45 tons
Low to Moderate Digging Resistance*	54.4 tonnes	60 tons
Rated Payload – High Lift		
Moderate to High Digging Resistance	38.1 tonnes	42 tons
Low to Moderate Digging Resistance*	49.9 tonnes	55 tons
Bucket Capacity Range	17.2-43.6 m <sup>3</sup>	22.3-57 yd <sup>3</sup>

\*Please contact your local dealer to determine if your application is suitable for this increased rated payload.

## Transmission

Transmission Type	Cat Planetary Power Shift	
Forward 1	7.4 km/h	4.6 mph
Forward 2	12.9 km/h	8.0 mph
Forward 3	21.9 km/h	13.6 mph
Reverse 1	8.1 km/h	5.0 mph
Reverse 2	14.1 km/h	8.8 mph
Reverse 3	24.0 km/h	14.9 mph
Direct Drive – Forward 1	Lock-up disables	
Direct Drive – Forward 2	14.0 km/h	8.7 mph
Direct Drive – Forward 3	24.5 km/h	15.2 mph
Direct Drive – Reverse 1	Lock-up disables	
Direct Drive – Reverse 2	15.5 km/h	9.6 mph
Direct Drive – Reverse 3	27.0 km/h	16.8 mph

- Travel speeds based on 58/85-57 tires.

## Hydraulic System – Lift/Tilt

Lift/Tilt System – Circuit	Positive Flow Control	
Lift/Tilt System – Pumps	Variable Displacement Piston	
Maximum Flow at 1,700 rpm Engine Speed	2047 L/min	541 gal/min
Relief Valve Setting – Lift/Tilt	32 500 kPa	4,587 psi
Cylinders, Double Acting		
Lift, Bore and Stroke	370 × 1713 mm	14.6 × 67.4 in
Tilt, Bore and Stroke	310 × 1086 mm	12.2 × 42.8 in
Pilot System	Open Loop and Pressure Reducing	

# 994K Wheel Loader Specifications

## Hydraulic Cycle Time

Rack Back	4.9 seconds
Raise	12.6 seconds
Dump	3.1 seconds
Lower Float Down	4.2 seconds
Total Hydraulic Cycle Time (empty bucket)	23.5 seconds

## Complete System Fill

Fuel Tank (standard)	3445 L	910 gal
Fuel Tank (with 24 hr attachment)	5678 L	1,500 gal
Cooling System	520 L	138 gal
Engine Crankcase	288 L	76 gal
Diesel Exhaust Fluid (DEF) (Tier 4 Final/Stage V)	519 L	137 gal
Transmission	416 L	110 gal
Differentials and Final Drives – Front	833 L	220 gal
Differentials and Final Drives – Rear	757 L	200 gal
Hydraulic Tank (implement and hydraulic fan)	1022 L	270 gal
Hydraulic Tank (steering and braking)	379 L	100 gal
Oil Renewal System (ORS)*	75.7 L	20 gal

\*Not available on Tier 4 Final/Stage V machines. Not available in all regions.

## Axles

Front	Fixed
Rear	Trunnion
Oscillation Angle	9°

## Brakes

Brakes	ISO 3450:2011
--------	---------------

## Cooling System

Ambient Capability Hydraulically Driven Demand Fan		
Standard	43° C	109.4° F
High (Tier 1 equivalent)	55° C	131° F
High (Tier 4 Final)	53° C	127.4° F

## Sound Performance

	Standard	Suppression
Operator Sound Level (ISO 6396:2008)		
Tier 1 Equivalent	72 dB(A)	71 dB(A)
Tier 4 Final/EU Stage V	72 dB(A)	71 dB(A)
Machine Sound Level (ISO 6395:2008)		
	119 dB(A)	117 dB(A)

### Sound Performance

- The measurement was conducted at 70 percent of the maximum engine cooling fan speed. Hearing protection may be needed when the machine is operated with a cab that is not properly maintained or when the doors or windows are open for extended periods or in a noisy environment.

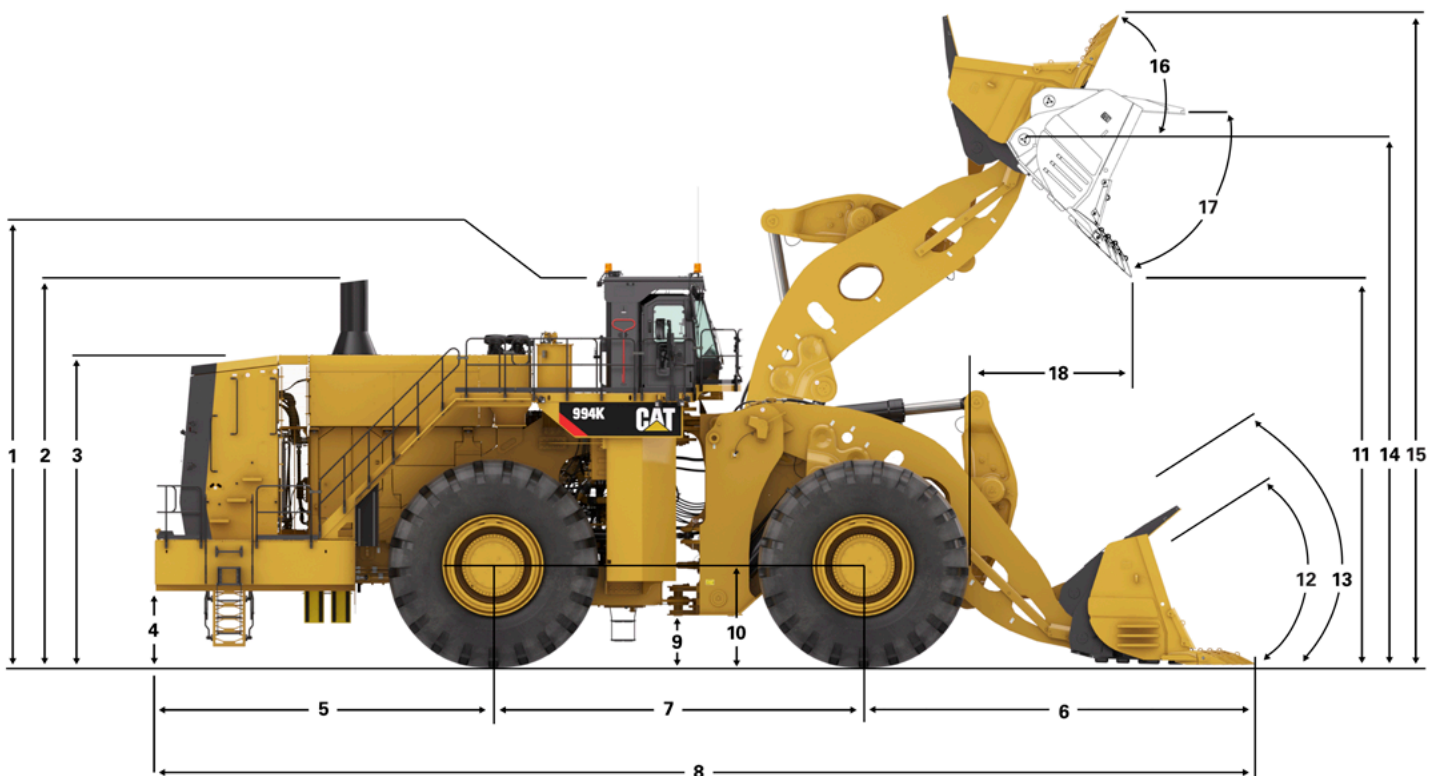
## Hydraulic System – Steering

Steering System – Circuit	Pilot, Load Sensing	
Steering System – Pump	Piston, Variable Displacement	
Maximum Flow @ 1,700 rpm Engine Speed	980 L/min	259 gal/min
Relief Valve Setting – Steering	31 000 kPa	4,496 psi
Total Steering Angle	80 degrees	
Steering Cycle Time (low idle)	7.6 seconds	
Steering Cycle Time (high idle)	4.3 seconds	

# 994K Wheel Loader Specifications

## Dimensions

All dimensions are approximate.



	Standard Lift		High Lift	
<b>1</b> Ground to Top of ROPS	7119 mm	23.4 ft	7119 mm	23.4 ft
<b>2</b> Ground to Top of Exhaust Stacks	7067 mm	23.2 ft	7067 mm	23.2 ft
<b>3</b> Ground to Top of Hood	5682 mm	18.6 ft	5682 mm	18.6 ft
<b>4</b> Ground to Bumper Clearance	1355 mm	4.4 ft	1355 mm	4.4 ft
<b>5</b> Rear Axle Center Line to Bumper	6205 mm	20.4 ft	6205 mm	20.4 ft
<b>6</b> Front Axle Center Line to Bucket Tip	6503 mm	21.3 ft	7097 mm	23.3 ft
<b>7</b> Wheel Base	6800 mm	22.3 ft	6800 mm	22.3 ft
<b>8</b> Maximum Overall Length	19 508 mm	64.0 ft	20 102 mm	66.0 ft
<b>9</b> Ground to Lower Hitch Clearance	898 mm	2.9 ft	898 mm	2.9 ft
<b>10</b> Ground to Center of Axles	1830 mm	6.0 ft	1830 mm	6.0 ft
<b>11</b> Clearance at Maximum Lift	6167 mm	20.2 ft	7095 mm	23.3 ft
<b>12</b> Rack Back Angle at Ground Level	39.7 degrees		45.0 degrees	
<b>13</b> Rack Back Angle at Carry	47.7 degrees		53.7 degrees	
<b>14</b> B-Pin Height at Maximum Lift	8790 mm	28.8 ft	9647 mm	31.7 ft
<b>15</b> Maximum Overall Height, Bucket Raised	11 771 mm	38.6 ft	12 545 mm	41.2 ft
<b>16</b> Rack Angle at Maximum Lift	59.5 degrees		59.4 degrees	
<b>17</b> Dump Angle at Maximum Lift	-50.0 degrees		-50.0 degrees	
<b>18</b> Reach at Maximum Lift	2821 mm	9.3 ft	2688 mm	8.8 ft
Tread Width	4300 mm	14.1 ft	4300 mm	14.1 ft
Width Over Tires (with bulge)	5758 mm	18.8 ft	5760 mm	18.8 ft

Note: Assumes 22.9 m<sup>3</sup> (30 yd<sup>3</sup>) bucket for standard lift, and 21.4 m<sup>3</sup> (28 yd<sup>3</sup>) bucket for high lift, fitted with Cat Advansys™ heavy-duty tips.  
Assumes tire size 58/85-57.

## Bucket Selection Guide

When sizing the bucket, it is important to consider the Maximum Swung Load. The Maximum Swung Load is the maximum allowed combined weight of the bucket and payload. The Maximum Swung Load should never be exceeded.

“Example Bucket Weight” includes spade edge, heavy-duty tips, half arrow segments, and two sidebar protectors.

If a bucket weight other than the weight specified in the table below is chosen, the bucket size can be evaluated using the following equations:

$$\text{Maximum Payload} = \text{Maximum Swung Load} - \text{Bucket Weight}$$

$$\text{Maximum Density} = (\text{Maximum Swung Load} - \text{Bucket Weight}) / \text{Bucket Volume}$$

$$\text{Target Payload} = 90\% \text{ of Maximum Payload}$$

**NOTE:** The default Target Payload (90% of Maximum Payload) is intended to accommodate variation in payload without exceeding the Maximum Swung Load.

The rated capacity of the tires should always be considered.

## Moderate to High Digging Resistance

### Standard Lift: Rated Payload 40.8 tonnes (45 tons), Maximum Swung Load 69 tonnes (76 tons)

Bucket Volume		Example Bucket Weight		Target Payload at Example Bucket Weight		Maximum Payload at Example Bucket Weight		Target Density at Example Bucket Weight		Maximum Density at Example Bucket Weight	
m <sup>3</sup>	yd <sup>3</sup>	kg	lb	tonnes	tons	tonnes	tons	kg/m <sup>3</sup>	lb/yd <sup>3</sup>	kg/m <sup>3</sup>	lb/yd <sup>3</sup>
17.2	22.5	21 993	48,473	42.3	46.6	47.0	51.8	2459	4,144	2732	4,604
19.1	25	21 595	47,595	42.7	47.0	47.4	52.2	2231	3,761	2479	4,179
21.4	28	22 479	49,544	41.9	46.1	46.5	51.3	1955	3,296	2172	3,662
22.9	30	23 090	50,890	41.3	45.5	45.9	50.6	1801	3,035	2001	3,373
24.5	32	23 626	52,072	40.8	45.0	45.4	50.0	1669	2,813	1854	3,125
32.1	42	23 207	51,148	41.2	45.4	45.8	50.5	1283	2,163	1426	2,403
39.8	52	25 281	55,719	39.3	43.4	43.7	48.2	989	1,668	1099	1,853

### High Lift: Rated Payload 38.1 tonnes (42 tons), Maximum Swung Load 65.4 tonnes (72.1 tons)

Bucket Volume		Example Bucket Weight		Target Payload at Example Bucket Weight		Maximum Payload at Example Bucket Weight		Target Density at Example Bucket Weight		Maximum Density at Example Bucket Weight	
m <sup>3</sup>	yd <sup>3</sup>	kg	lb	tonnes	tons	tonnes	tons	kg/m <sup>3</sup>	lb/yd <sup>3</sup>	kg/m <sup>3</sup>	lb/yd <sup>3</sup>
17.2	22.5	21 993	48,473	39.1	43.1	43.4	47.9	2272	3,830	2525	4,256
19.1	25	21 595	47,595	39.4	43.5	43.8	48.3	2064	3,479	2293	3,865
21.4	28	22 479	49,544	38.7	42.6	42.9	47.3	1806	3,043	2006	3,381
22.9	30	23 090	50,890	38.1	42.0	42.3	46.7	1661	2,800	1846	3,111
24.5	32	23 626	52,072	37.6	41.5	41.8	46.1	1538	2,592	1708	2,880
32.1	42	23 207	51,148	38.0	41.9	42.2	46.5	1183	1,994	1315	2,216
39.8	52	25 281	55,719	36.1	39.8	40.1	44.3	909	1,532	1010	1,702

# 994K Wheel Loader Specifications

## Low to Moderate Digging Resistance\*

**Standard Lift: Rated Payload 54.4 tonnes (60 tons), Maximum Swung Load 83 tonnes (91.4 tons)**

Bucket Volume		Example Bucket Weight		Target Payload at Example Bucket Weight		Maximum Payload at Example Bucket Weight		Target Density at Example Bucket Weight		Maximum Density at Example Bucket Weight	
m <sup>3</sup>	yd <sup>3</sup>	kg	lb	tonnes	tons	tonnes	tons	kg/m <sup>3</sup>	lb/yd <sup>3</sup>	kg/m <sup>3</sup>	lb/yd <sup>3</sup>
21.4	28	22 479	49,544	54.4	60.0	60.5	66.7	2543	4,286	2825	4,762
22.9	30	23 090	50,890	53.9	59.4	59.9	66.0	2349	3,960	2610	4,400
24.5	32	23 626	52,072	53.4	58.9	59.3	65.4	2183	3,679	2425	4,088
29.1	38	26 919	59,329	50.4	55.6	56.0	61.8	1736	2,926	1929	3,251
43.6	57	25 545	56,301	51.7	57.0	57.4	63.3	1186	1,999	1317	2,221

**High Lift: Rated Payload 49.9 tonnes (55 tons), Maximum Swung Load 77.9 tonnes (85.9 tons)**

Bucket Volume		Example Bucket Weight		Target Payload at Example Bucket Weight		Maximum Payload at Example Bucket Weight		Target Density at Example Bucket Weight		Maximum Density at Example Bucket Weight	
m <sup>3</sup>	yd <sup>3</sup>	kg	lb	tonnes	tons	tonnes	tons	kg/m <sup>3</sup>	lb/yd <sup>3</sup>	kg/m <sup>3</sup>	lb/yd <sup>3</sup>
19.1	25	21 595	47,595	50.7	55.9	56.3	62.1	2652	4,470	2947	4,967
21.4	28	22 479	49,544	49.9	55.0	55.4	61.1	2331	3,929	2590	4,365
22.9	30	23 090	50,890	49.3	54.4	54.8	60.4	2151	3,626	2390	4,029
24.5	32	23 626	52,072	48.9	53.9	54.3	59.8	1997	3,366	2219	3,740
29.1	38	26 919	59,329	45.9	50.6	51.0	56.2	1580	2,663	1755	2,959
43.6	57	25 545	56,301	47.1	52.0	52.4	57.7	1082	1,823	1202	2,026

\*Please contact your local dealer to determine if your application is suitable for this increased rated payload.

# 994K Wheel Loader Specifications

## Operating Specifications – Standard Lift

For machines equipped with 58/85-57 tires (SLR: 1820 mm/6 ft) – see additional tables for other tire sizes.

Bucket Type		Rock			
Ground Engaging Tools		Teeth & Segment			
Cutting Edge Type		Spade			
Bucket Part No. (Group Level)		389-4420	389-4430	389-4440	389-4450
Bucket Load at Rated Capacity	kg	40 823	40 823	40 823	40 823
	lb	90,000	90,000	90,000	90,000
Rated Capacity	m <sup>3</sup>	19.1	21.4	22.9	24.5
	yd <sup>3</sup>	25	28	30	32
Struck Capacity – ISO*	m <sup>3</sup>	15	18	19	20
	yd <sup>3</sup>	19.6	23.5	24.9	26.2
Heaped Capacity – ISO*	m <sup>3</sup>	19	21	23	24
	yd <sup>3</sup>	24.9	27.5	30.0	31.4
Bucket Width – Overall	mm	6240	6240	6240	6240
	ft	20.5	20.5	20.5	20.5
Clearance at 45° Dump (Tooth Tip)	mm	6347	6238	6167	6100
	ft	20.8	20.5	20.2	20.0
Reach at 45° Dump (Tooth Tip)	mm	2641	2750	2821	2888
	ft	8.7	9.0	9.3	9.5
Bucket Pin at Maximum Lift	mm	8790	8790	8790	8790
	ft	28.8	28.8	28.8	28.8
Horizontal Arm and Level Bucket Reach	mm	5583	5737	5837	5932
	ft	18.3	18.8	19.1	19.5
Digging Depth (Segment)	mm	232	232	232	232
	ft	0.8	0.8	0.8	0.8
Overall Length – Bucket Level Ground	mm	19 254	19 408	19 508	19 603
	ft	63.2	63.7	64.0	64.3
Front Axle to Bucket Tip Ground	mm	6249	6403	6503	6598
	ft	20.5	21.0	21.3	21.6
Overall Height	mm	11 541	11 688	11 771	11 874
	ft	37.9	38.3	38.6	39.0
Turning Radius – Corner SAE Carry	mm	13 727	13 771	13 800	13 828
	ft	45.0	45.2	45.3	45.4
Reach at 45° Dump and 2.13 m (7 ft) Height (with Teeth)	mm	4349	4454	4522	4585
	ft	14.3	14.6	14.8	15.0
Rack Back Angle at SAE Carry	degree	47.7	47.7	47.7	47.7
Full Dump at Maximum Lift	degree	-50.0	-50.0	-50.0	-50.0

\*Full compliance to ISO 14397-1:2007 Sections 1 through 6, which requires 2% verification between calculations and testing.

(chart continued on next page)

# 994K Wheel Loader Specifications

## Operating Specifications – Standard Lift *(continued)*

For machines equipped with 58/85-57 tires (SLR: 1820 mm/6 ft) – see additional tables for other tire sizes.

Bucket Type		Rock			
Ground Engaging Tools		Teeth & Segment			
Cutting Edge Type		Spade			
Bucket Part No. (Group Level)		389-4420	389-4430	389-4440	389-4450
Bucket Load at Rated Capacity	kg	40 823	40 823	40 823	40 823
	lb	90,000	90,000	90,000	90,000
Rated Capacity	m <sup>3</sup>	19.1	21.4	22.9	24.5
	yd <sup>3</sup>	25	28	30	32
Struck Capacity – ISO	m <sup>3</sup>	15	18	19	20
	yd <sup>3</sup>	19.6	23.5	24.9	26.2
Heaped Capacity – ISO	m <sup>3</sup>	19	21	23	24
	yd <sup>3</sup>	24.9	27.5	30.0	31.4
Tipping Load at Operating Weight – Straight	kg	159 823	158 190	157 062	156 085
	lb	352,348	348,749	346,263	344,107
Tipping Load at Operating Weight – Straight*	kg	150 697	149 006	147 840	146 825
	lb	332,230	328,502	325,931	323,693
Tipping Load at Operating Weight – Articulated 40°	kg	137 845	136 286	135 207	134 275
	lb	303,896	300,459	298,081	296,025
Tipping Load at Operating Weight – Articulated 40°*	kg	123 391	121 745	120 610	119 624
	lb	272,030	268,401	265,899	263,725
Tipping Load at Operating Weight – Bucket Level Ground	kg	135 113	130 634	127 808	125 353
	lb	297,872	287,997	281,768	276,356
Tipping Load at Operating Weight – Bucket Level Ground*	kg	126 010	121 984	119 430	117 209
	lb	277,804	268,928	263,298	258,401
Breakout Force – SAE Rated	kN	1401.1	1307.7	1252.7	1206.2
	lbf	314,980	293,992	281,617	271,160
Operating Weight	kg	238 466	239 371	240 018	240 554
	lb	525,727	527,723	529,149	530,329
Weight Distribution at SAE Carry – Front	kg	124 673	126 336	127 518	128 511
	lb	274,858	278,522	281,129	283,319
Weight Distribution at SAE Carry – Rear	kg	113 792	113 036	112 500	112 042
	lb	250,869	249,200	248,020	247,010
Loaded Machine Weight	kg	279 289	280 194	280 841	281 377
	lb	615,726	617,722	619,148	620,329
Weight Distribution at SAE Carry – Front	kg	192 099	193 989	195 324	196 461
	lb	423,505	427,672	430,615	433,121
Weight Distribution at SAE Carry – Rear	kg	87 190	86 205	85 518	84 916
	lb	192,220	190,050	188,534	187,208

\*With Tire Squash.



# 994K Wheel Loader Specifications

## Operating Specifications – High Lift

For machines equipped with 58/85-57 tires (SLR: 1820 mm/6 ft) – see additional tables for other tire sizes.

Bucket Type		Rock			
Ground Engaging Tools		Teeth & Segment			
Cutting Edge Type		Spade			
Bucket Part No. (Group Level)		389-4420	389-4430	389-4440	389-4450
Bucket Load at Rated Capacity	kg	38 102	38 102	38 102	38 102
	lb	84,000	84,000	84,000	84,000
Rated Capacity	m <sup>3</sup>	19.1	21.4	22.9	24.5
	yd <sup>3</sup>	25	28	30	32
Struck Capacity – ISO	m <sup>3</sup>	15	18	19	20
	yd <sup>3</sup>	19.6	23.5	24.9	26.2
Heaped Capacity – ISO	m <sup>3</sup>	19	21	23	24
	yd <sup>3</sup>	24.9	27.5	30.0	31.4
Bucket Width – Overall	mm	6240	6240	6240	6240
	ft	20.5	20.5	20.5	20.5
Clearance at 45° Dump (Tooth Tip)	mm	7204	7095	7024	6957
	ft	23.6	23.3	23.0	22.8
Reach at 45° Dump (Tooth Tip)	mm	2579	2688	2758	2826
	ft	8.5	8.8	9.0	9.3
Bucket Pin at Maximum Lift	mm	9647	9647	9647	9647
	ft	31.6	31.6	31.6	31.6
Horizontal Arm and Level Bucket Reach	mm	6149	6303	6403	6498
	ft	20.2	20.7	21.0	21.3
Digging Depth (Segment)	mm	239	239	239	239
	ft	0.8	0.8	0.8	0.8
Overall Length – Bucket Level Ground	mm	19 948	20 102	20 202	20 297
	ft	65.4	66.0	66.3	66.6
Front Axle to Bucket Tip Ground	mm	6943	7097	7197	7292
	ft	22.8	23.3	23.6	23.9
Overall Height	mm	12 398	12 545	12 628	12 731
	ft	40.7	41.2	41.4	41.8
Turning Radius – Corner SAE Carry	mm	13 976	14 017	14 045	14 071
	ft	45.9	46.0	46.1	46.2
Reach at 45° Dump and 2.13 m (7 ft) Height (with Teeth)	mm	4916	5021	5088	5152
	ft	16.1	16.5	16.7	16.9
Rack Back Angle at SAE Carry	degree	53.5	53.5	53.5	53.5
Full Dump at Maximum Lift	degree	-50.0	-50.0	-50.0	-50.0

(chart continued on next page)

# 994K Wheel Loader Specifications

## Operating Specifications – High Lift *(continued)*

For machines equipped with 58/85-57 tires (SLR: 1820 mm/6 ft) – see additional tables for other tire sizes.

Bucket Type		Rock			
Ground Engaging Tools		Teeth & Segment			
Cutting Edge Type		Spade			
Bucket Part No. (Group Level)		389-4420	389-4430	389-4440	389-4450
Bucket Load at Rated Capacity	kg	38 102	38 102	38 102	38 102
	lb	84,000	84,000	84,000	84,000
Rated Capacity	m <sup>3</sup>	19.1	21.4	22.9	24.5
	yd <sup>3</sup>	25	28	30	32
Struck Capacity – ISO	m <sup>3</sup>	15	18	19	20
	yd <sup>3</sup>	19.6	23.5	24.9	26.2
Heaped Capacity – ISO	m <sup>3</sup>	19	21	23	24
	yd <sup>3</sup>	24.9	27.5	30.0	31.4
Tipping Load at Operating Weight – Straight	kg	140 091	138 667	137 676	136 827
	lb	308,847	305,708	303,524	301,651
Tipping Load at Operating Weight – Straight*	kg	132 782	131 300	130 272	129 385
	lb	292,734	289,467	287,200	285,245
Tipping Load at Operating Weight – Articulated 40°	kg	120 292	118 917	117 960	117 141
	lb	265,198	262,168	260,057	258,251
Tipping Load at Operating Weight – Articulated 40°*	kg	108 277	106 814	105 800	104 925
	lb	238,710	235,484	233,249	231,320
Tipping Load at Operating Weight – Bucket Level Ground	kg	117 056	113 375	111 031	108 994
	lb	258,063	249,948	244,782	240,291
Tipping Load at Operating Weight – Bucket Level Ground*	kg	110 225	106 841	104 676	102 794
	lb	243,004	235,544	230,771	226,622
Breakout Force – SAE Rated	kN	1335.0	1245.6	1192.9	1148.3
	lbf	300,129	280,028	268,171	258,148
Operating Weight	kg	239 693	240 598	241 245	241 781
	lb	528,432	530,428	531,854	533,034
Weight Distribution at SAE Carry – Front	kg	129 194	130 922	132 151	133 180
	lb	284,823	288,633	291,343	293,611
Weight Distribution at SAE Carry – Rear	kg	110 499	109 677	109 094	108 601
	lb	243,609	241,795	240,511	239,423
Loaded Machine Weight	kg	277 795	278 700	279 347	279 883
	lb	612,432	614,428	615,855	617,035
Weight Distribution at SAE Carry – Front	kg	195 479	197 370	198 709	199 840
	lb	430,958	435,126	438,077	440,571
Weight Distribution at SAE Carry – Rear	kg	82 315	81 330	80 639	80 043
	lb	181,474	179,302	177,777	176,464

\*With Tire Squash.

## Standard and Optional Equipment

Standard and optional equipment may vary. Consult your Cat® dealer for details.

	Standard	Optional		Standard	Optional
<b>POWER TRAIN</b>			<b>OPERATOR ENVIRONMENT</b>		
Engine, 3516E High Displacement (HD) Mechanical Electronic Unit Injector (MEUI™-A), Air-to-Air Aftercooling (ATAAC) diesel, turbocharged/aftercooled	✓		Premium seat with heated and actively cooled leather, adjustable lumbar support, air adjustable bolsters on the seat and backrest, seat cushion tilt adjustment, and adjustable length seat cushion	✓	
Engine prelube	✓		Bonded glass, tinted	✓	
Fuel priming pump (electric)	✓		Rubber-mounted, high-impact resistant solar control glass (Complies with AS/NZS 2080)		✓
Ground-level engine shutoff	✓		Dual lever lift and tilt function controls	✓	
Engine air intake (above hood) precleaner	✓		Joystick lift and tilt function controls		✓
Aluminum Modular Radiator (AMR)	✓		Implement kickouts	✓	
Automatic, ether starting aid	✓		Air conditioner	✓	
Electronic throttle lock	✓		Cab pressure indicator	✓	
Impeller Clutch Torque Converter (ICTC) with Lock-Up Clutch and rimpull control system	✓		Graphical touchscreen information display conveys real-time operating information and payload measurement	✓	
Rimpull control system	✓		Heater, defroster, auto temperature controls	✓	
Planetary powershift, 3F/3R electronic control transmission	✓		Gauge instrumentation:	✓	
Oil Renewal System (ORS)* (for increased time between oil changes)		✓	– DEF level, if equipped		
Delayed engine shutdown	✓		– Coolant temperature		
Oil-cooled, multi-disc, service brakes	✓		– Hydraulic oil temperature		
Electro-hydraulic parking brake	✓		– Fuel level		
<b>LINKAGE</b>			– Power train oil temperature		
Standard lift (40.8 tonnes/45 tons face, 54.4 tonnes/60 tons loose)	✓		– Engine speed (tachometer)		
High lift (38.1 tonnes/42 tons face, 49.9 tonnes/55 tons loose)		✓	– Transmission gear		
<b>ELECTRICAL</b>			– Ground speed		
Alternator	✓		– Engine hour meter		
Dry batteries	✓				
10/15 amp, 24V to 12V converter	✓				
Disconnect switch to bumper	✓				
LED warning lights (pattern selectable)	✓				
LED lighting system (working lights, access and service platform lights, turn signals/hazard lights)	✓				
Emergency jump-start receptacle	✓				
Starter and transmission lockout in bumper	✓				
24V starting and charging system	✓				
Electric starters	✓				

(continued on next page)

\*Not available in all regions.

# 994K Standard and Optional Equipment

## Standard and Optional Equipment (continued)

Standard and optional equipment may vary. Consult your Cat dealer for details.

	Standard	Optional		Standard	Optional
<b>OPERATOR ENVIRONMENT (continued)</b>			<b>SAFETY</b>		
Warning/indicator instrumentation:	✓		Ground-access ladders	✓	
– Low DEF level, if equipped			Powered ground-access stairs		✓
– Grease tank level			Rear-vision camera	✓	
– Three-category action alert system			Cat Detect (Rear Object Detection)		✓
– Brake malfunction			Front frame access with steps	✓	
– Bucket float status			Front walkway around cab	✓	
– Delayed engine shutdown status			Pump bay access ladders with T-handle and platform	✓	
– Engine idle shutdown status			Tie-offs on ROPS and radiator guards	✓	
– Engine malfunction			Steering frame lock	✓	
– Fuel economy mode enable status			Wheel chocks		✓
– Hydraulic lockout			Stairways on both sides of the machine	✓	
– Lockup clutch enable status			LED stairway and access lights	✓	
– Low fuel level			Toe kicks	✓	
– Parking brake status			Electric (field and shop) horns	✓	
– Quick-shift enable status			Retractable seatbelt, 76 mm (3 in) wide	✓	
– Rimpull control enable status			Trainer seat with lap belt, 76 mm (3 in) wide	✓	
– Seat belt warning			Back-up alarm	✓	
– Secondary steering			Secondary steering	✓	
– Throttle lock status			<b>COLD WEATHER</b>		
– Transmission gear			Cold-weather cooling fan bypass (recommended for temperatures below –29° C [–20° F])		✓
– Turn signal			Heavy-duty starter (provides an additional electric starter motor and two additional batteries for a total of three starter motors and six batteries) (recommended for temperatures below 0° C [32° F])		✓
Keypad control with indicator lights:	✓		240V engine oil and coolant heating elements (recommended in conditions from –18° C to –30° C [0° F to –22° F])		✓
– Fuel economy mode			Fuel heater (heated by recirculation using engine heat and a heat exchanger) (recommended in conditions from –18° C to –30° C [0° F to –22° F])		✓
– Implement kickouts			Heated mirrors (recommended for below-freezing temperatures)		✓
– Lockup clutch					
– Manual lube					
– Quickshift enable					
– Rimpull control system					
– Throttle lock					
– Turn signals					
– Dash backlight control					
– Hazard lights					
Dome light in cab	✓				
Lunchbox and beverage holders	✓				
Steering and Transmission Integrated Control (STIC™) system	✓				
Sun screen, pull down (front and rear)	✓				
Vital Information Management System (VIMS™) with Information Display: external data port, Cycle Timer, integrated Cat Production Measurement (CPM)	✓				
Keypad, messenger, ET, VIMS	✓				
AM/FM/AUX radio		✓			
AM/FM/AUX/USB/BT/CD/SAT radio		✓			
Coat hook	✓				

(continued on next page)

## Standard and Optional Equipment *(continued)*

Standard and optional equipment may vary. Consult your Cat dealer for details.

	Standard	Optional		Standard	Optional
<b>MACHINE CONTROL AND GUIDANCE</b>			<b>SERVICE</b>		
CPM Payload Weighing System	✓		Ground-level service center including:	✓	
Cat Terrain ready		✓	– Service center light		
<b>FUEL TANK</b>			– Implement and cooling fan oil level indicator		
12 hour (3440 L/910 gal)	✓		– Steering and brake oil level indicator		
24 hour (5700 L/1,506 gal)		✓	– Window washer solvent level indicator		
<b>COOLING</b>			– Transmission oil level indicator		
Standard ambient package (recommended for site conditions that do not exceed 43° C [110° F])	✓		– DEF level indicator (if equipped)		
High ambient package (recommended for site conditions that do not exceed 53° C [127° F])		✓	– Fuel level indicator		
<b>RIMS AND TIRES</b>			– Engine oil level indicator		
Rims – 1118 mm (44") (44 × 57) 152 mm (6") flange For use with 53.5/85-57 76PR L5 tires		✓	– Engine coolant level indicator		
Rims – 1194 mm (47") (47 × 57) 152 mm (6") flange For use with 58/85-57 84PR L4 tires		✓	– Automatic lubrication system grease tank level indicator		
Rims – 1194 mm (47") (47 × 57) 127 mm (5") flange For use with 60/80 R57 L5R XMine D2 SR tires		✓	– DEF purge indicator lamp		
Tires – 58/85-57 84PR L4 (require 47" rims)		✓	– Transmission lockout and LED		
Tires – 53.5/85-57 FS 76PR L5 (require 44" rims)		✓	– Starter lockout and LED		
<b>SPARE RIMS</b>			– Heavy-duty battery disconnect switch		
1118 mm (44") 152 mm (44 × 57) (6") flange		✓	– Stairway light switch		
1194 mm (47") 152 mm (44 × 57) (6") flange		✓	– Service lighting switch (if equipped)		
1194 mm (47") 127 mm (47 × 57) (5") flange		✓	– Fuel shutoff engine shutdown switch		
			– Engine oil fast-fill port		
			– Transmission oil fast-fill port		
			– Steering and brake hydraulic oil fast-fill port		
			– Steering and brake hydraulic oil drain port		
			– Oil renewal system fast-fill port		
			– Engine coolant fast-fill port		
			– DEF fill port (HRC only)		
			– Implement and cooling fan hydraulic oil fast-fill port		
			– Implement and cooling hydraulic oil drain port		
			– Automatic lubrication system grease tank fill port		
			– 24V jump-start receptacle		
			– 240V jacket water and engine oil heater plug (if equipped)		
			– 12V power port		
			– VIMS key switch		
			– 14-pin machine data port		
			– VIMS Messenger display		

*(continued on next page)*

# 994K Standard and Optional Equipment

## Standard and Optional Equipment (continued)

Standard and optional equipment may vary. Consult your Cat dealer for details.

	Standard	Optional		Standard	Optional
<b>SERVICE (continued)</b>			<b>SERVICE (continued)</b>		
In-tank mounted cartridge-type case drain filters with in-line magnetic plugs on implement, cooling fan, brake and steering pumps	✓		Premixed 50% concentration of extended-life coolant with freeze protection to -34° C (-29° F)	✓	
High-pressure screens on the output side of implement, cooling fan, brake and steering pumps	✓		Rear access to cab and service platform	✓	
Pump efficiency monitoring	✓		Load-sensing steering	✓	
Automatic lubrication system greases the linkage, hitch, steering and axle trunnion bearings	✓		Supplemental steering system	✓	
Electronic pressure control of the automatic lubrication system eliminates pressure adjustment and monitors grease thickness for temperature compatibility	✓		Vandalism protection caplocks	✓	
Rock guards on linkage grease lines	✓		Cooling cleanout service package	✓	
Cat O-ring face seal couplings	✓		VIMS download and Cat Electronic Technician service port in bumper	✓	
Lockable service access doors	✓		Product Link™ satellite		✓
Ecology drains for engine, radiator, hydraulic tank, steering and brake tank, brake cooling tank and axles	✓		Product Link cellular		✓
High-speed engine oil change system	✓		Product Link (dual mode – satellite/cellular)		✓
Ground-level fast-fill fuel system	✓		Service lights (engine bay, service center)	✓	
Transmission guard	✓		Additional service lights (pump bay, front frame and bumper)		✓
Drawbar hitch with pin	✓		<b>EFFICIENCY</b>		
Cat XT™ hoses	✓		Economy Mode	✓	
Left-side service center	✓		Variable displacement implement pumps	✓	
Oil sampling valves	✓		Variable displacement load sensing steering	✓	
			Variable displacement cooling fan pump	✓	
			Torque converter lock-up clutch	✓	
			<b>SOUND</b>		
			Sound-suppression package		✓

For more complete information on Cat products, dealer services, and industry solutions, visit us on the web at [www.cat.com](http://www.cat.com)

© 2021 Caterpillar  
All rights reserved

AEXQ2519-02 (08-2021)  
Replaces AEXQ2519-01  
(Global)

Materials and specifications are subject to change without notice. Featured machines in photos may include additional equipment. See your Cat dealer for available options.

CAT, CATERPILLAR, LET'S DO THE WORK, their respective logos, "Caterpillar Corporate Yellow," the "Power Edge" and Cat "Modern Hex" trade dress as well as corporate and product identity used herein, are trademarks of Caterpillar and may not be used without permission.

